



Dynamic Simulation of Regional Sustainable Tourism Development System

Yan Tang

School of Management , Jinan University, Guangzhou510632, China

ABSTRACT

Integrated existing research, tourism sustainable development is primarily related to tourism, population, society, resources and environment, the five basic elements, therefore, can be considered the essence of sustainable development of tourism that is to promote tourism and population, society, resources, coordinated development side of the environment. Sustainable development of tourism between tourism, population, society, resources and environment by the interaction of a complex system interconnected posed.

KEYWORDS : Tourism Competitiveness, Schematic Diagram, Dynamic Modeling System

Introduction

With the deterioration of the global ecological environment, economic development and environmental carrying capacity have become increasingly prominent issue of sustainable development has increasingly become a hot topic.

Core technologies

Excellent tourism can achieve transformation must rely on the smart of the new technological revolution, in which networking technology, cloud technology, sensor technology, RF technology, network technology, intelligent information processing technology, the most important calculations. These techniques become an excellent tourist city smart transformation vector, urban operations and management tools [1]. Fig.1 shows the measures to prevent the progressive collapse of the structure.

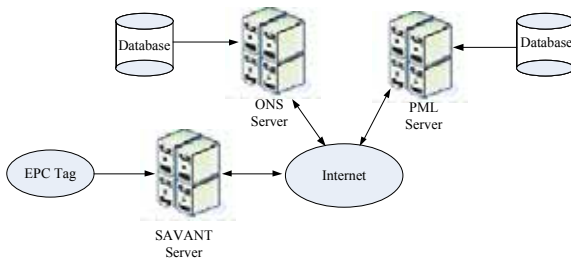


Fig. 1.The schematic diagram of system components

Comparison with the results

A comparison with the results show that the results of the number two in the tourism business, tourism employed population, the number of visitors, tourism professionals and technical personnel continued to maintain a rapid growth, and more growth, and increase the stock of pollution decreased significantly, decreasing trend in tourism resources stocks have a greater ease, residents travel awareness has been maintained at a high level.

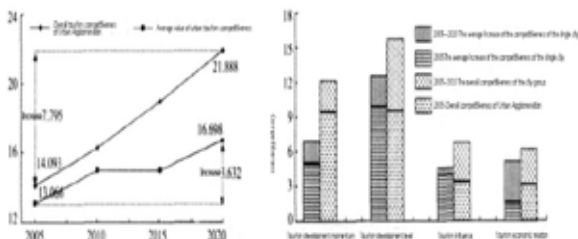


Fig. 2.Comparative analysis of tourism competitiveness between entire urban agglomeration and its inner cities

Conclusion

Dynamic Modeling System is an important method for complex systems research in the field of economic, sustainable development of tourism as the research object, the number of links between key elements of analysis between internal systems, the establishment of the system of power on Sustainable Development theoretical models.

REFERENCES

[1]Ttsai, M., W. Lee and H. Wu (2010). Determinants of RFID adoption intention: Evidence from Taiwanese retail chains. Information & Management, 47(5-6), p. 255-261.