



## Detection of Bisphenol - A in Dental Materials by High Pressure Liquid Chromatography – Electrochemical Detector

Shockry M.  
Mustafa

College of Dental Surgery, The Arab American University, P.O.Box 240, Jenin, Palestine

Ismail Masri

College of Dental Surgery, The Arab American University, P.O.Box 240, Jenin, Palestine

### ABSTRACT

The xenoestrogenic substance bisphenol-A (BPA) is an important chemical building block that is used primarily to make polycarbonate plastic and epoxy resins, both of which are used in a wide variety of applications for example, eyeglass lenses, digital media, (electronic and electrical equipment housings), food, and dental materials. Increasing the risk of human exposure to BPA, mainly through food and dental materials (sealants or composites)

results in endocrine disrupting chemicals (EDCs). Exposure to BPA and its potential effect on human health are receiving increase attention, as studies on laboratory animals have shown that BPA can cause genetic damage. BPA stimulates cell proliferation and induce expression of estrogen-responsive gene in vitro. BPA was detachable from diglycidyl methacrylate, which is frequently utilized as the chief dimethacrylate monomer in polymerized materials utilized as a part of this study were polluted with BPA. Quantitative examination utilizing bisphenol-F as internal standard. BPA substance in business dental materials going from < 1 microgram/g material to around 20 micrograms/g material. The polymerized dental materials discharged up to 100 ng/g material into phosphate saline 24-h hatching. These outcomes show that BPA can be discharged from dental materials.

**KEYWORDS :** Bisphenol A , endocrine disorder , dental material

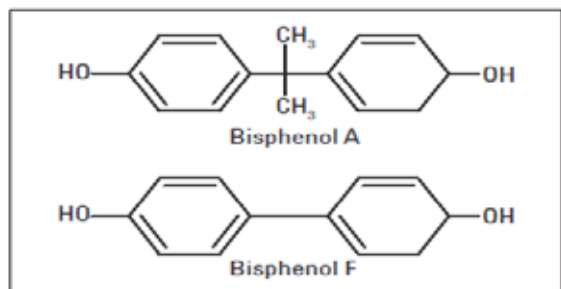
### Introduction

BPA is a monomer used to make polycarbonate plastic and epoxy resins.

Traces of BPA can leach out of this polycarbonate plastic surfaces under various environmental conditions such as heat or pH changes and eventually are consumed by humans. BPA was detected in various matrices such as urine, dental materials<sup>2</sup> ground water and plasma.

Taking into account the suspicion that a limit exists above which poisonous impacts are seen the U.S Environmental Protection Agency (US EPA) has built up 50 µg/kg body weight/day as the reference measurement (RfD) for BPA<sup>1</sup>. In this research we used a structurally similar commercially available compound bisphenol F, (BPF), along with BPA to determine separation efficiency. We utilized a comparative monetarily accessible compound bisphenol (BPF) (Figure 1).

The HPLC-ED (ECD) method offers significant advantages over other analytical instruments including selectivity, sensitivity needed to monitor BPA in dental material. Ethyl acetate hplc grade used for BPA and BPF (liquid/liquid extraction).



**Figure1** Molecular structures of bisphenol A and bisphenol F

### Reagents and materials

All chemicals and solvents used were HPLC grade. Acetonitrile and ethyl acetate were purchased from Carlo Erba. Standards of bisphenol A and bisphenol F and potassium phosphate monobasic was purchased from Sigma-Aldrich

### Preparation of standards

1 mg of analytical grade BPA (>99%, Sigma-Aldrich, USA) in 1 ml of acetonitrile. From this, 3, 5, 10, 25 and 50 ng/ml BPA and BPF were prepared freshly by diluting the stock solutions using the dilution buffer of 5% acetonitrile and 95% 10 mM monobasic potassium phosphate in water. Both the standards and the unknown samples (in triplicate) were finally analyzed using Jasco HPLC system, equipped with EC (Antec-Decade).

### Chromatographic parameters

The chromatographic parameters for reverse phase Dr. Maisch (C<sub>8</sub> 150mm x4.6 mm) liquid chromatography Using Jasco PU 1580-i and Antec (Decade ECD) figure 2

Column 4.6x150 mm 5 µm

Temperature: 40 °C

EC cell 0.9 mv oxidation mode

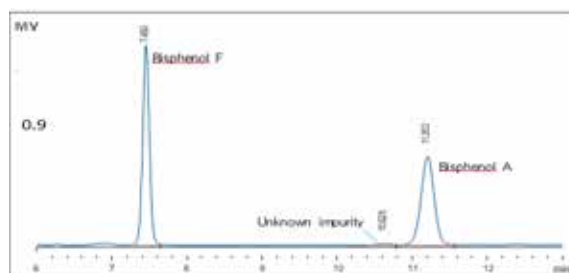
Mobile phase A: 10 mM monobasic potassium phosphate in water

Mobile phase B: 35% Acetonitrile

Gradient: Time (min) %B

0	5
2	5
12.5	35

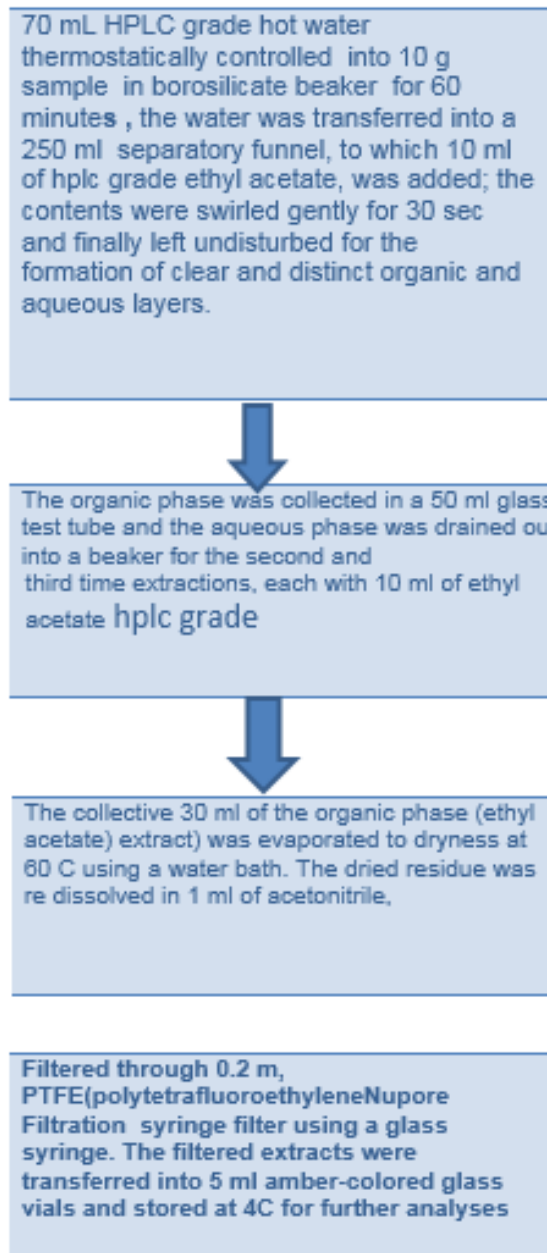
Flow: 0.9 mL/min  
Injection volume: 20 µl



**Figure2** Separation of 3ng/ml Solution of bisphenol F and bisphenol A using hplc with C<sub>8</sub> column, ECD.

### Sample preparation

BPA was extracted following the schematic shown in Figure 3



**Figure 3** Extraction of BPA from dental material and sample preparation

### Recovery

To check the recovery rate of BPA achieved in the extraction method employed in this study, BPA aqueous solution in the concentration of 10, 25 and 50 ng /ml was made and the solutions extracted with ethyl acetate, similar to that of the samples .in figure 2. Finally, chromatograms of the BPA extracts prepared from the known concentrated BPA aqueous solutions compared to those of the external standards (3, 5, 10, 25 and 50 ng /ml) and percentage efficiency of BPA extraction procedure was calculated. Finally in three different brands of dental materials analyzed to determine the leaching concentration of the two bisphenols using the standards and HPLC method. The method was then transferred to Jasco 1580i system and run on C8 column using the same experimental conditions to test resolution and sensitivity of this method figure 4

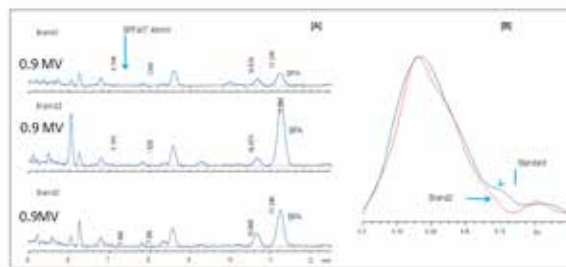
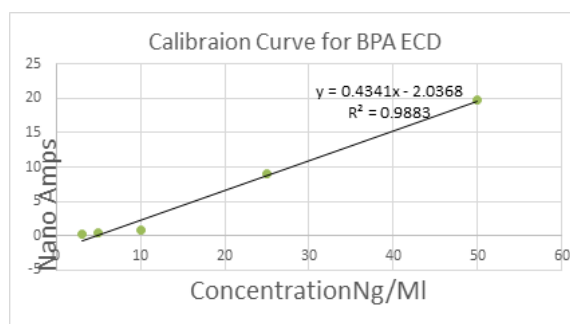


Figure 4[A] the overlay of chromatogram from three different dental material analyzed for BPA and BPF. [B] The overlay of the oxidation spectrum of BPA from standard and that obtained from sample 2

### Results and discussion

The concentration of BPA derived using the peak area of external standards versus BPA concentration by fitting into the linear curve equation. The results show using hot water, provides evidence for BPA leaching from the samples to the water stored at minimum temperature (70 C for 1 h) .figure 5



**Figure 5** Calibration curve for BPA

### Conclusion

The bisphenols show trademark oxidation designs over the cluster that is of quality while testing these compounds in complex matrix. HPLC-ECD is one of the most sensitive analytical procedures available today. In spite of the fact that it is a prevalent view that moderately few compounds are electrochemically dynamic this assumption is wrong. Numerous compounds, for example, endogenous metabolites, drugs, poisons, and contaminants are capable of HPLC-ECD.3,4 The amperometric anode offers unrivaled sensitivity and selectivity as well as offers unparalleled stability and is maintenance free without routine operation. As analysts are recognized, both by retention time and oxidation behavior across the array compound misidentification and co elution are minimized.

From the perspective of the safety of dental materials, it is necessary to assess the

Contribution of dental materials to the overall body burden of BPA, and whether or

not individual patients could be influenced by exposure to dental materials that contain BPA or BPA-based compounds.

Concerns have been expressed about the possible exposure of patients to BPA from dental materials, in particular some fissure sealants. Bisphenol glycidyl dimethacrylate( Bis-GMA) is one of the most commonly used monomers for both anterior and posterior resin restorative materials, fissure sealants and a range of other dental products. Bis-GMA derived from the reaction of bisphenol A and glycidyl dimethacrylate. This resin is commonly referred to as Bowen's resin, after its inventor. There are also several composites that use a urethane methacrylate resin (UDMA) rather than Bis-GMA. Bis-GMA and urethane. It has been demonstrated that BPA may be released from some resin composite restorative materials and fissure sealants (5). In the event If BPA is observed to be leached from dental restorative materials at that point this might be for one to two reasons.

The release may be due to residual BPA being available in the resin as part of the production process of Bis-GMA as a contaminant. The polymerized dental materials released up to 91.4 ng bisphenol-A/g material into phosphate buffered saline during 24-h incubation. These results indicate that bisphenol-A can be released from dental materials, however the leachable amount would be less than 1/1000 of the reported dose (2 micrograms/kg body weight/day) required for xenoestrogenicity in vivo.<sup>6</sup>

### References

1. U.S Environmental Protection Agency (U.S.EPA), Bisphenol A (CASRN 80-50-7) <http://www.epa.gov/iris/subst/0356.htm> Olea N., et al., (1996).
2. Estrogenicity of resin-based composites and sealants used in dentistry. *Environ. Health Persp.*, 104, 298–305
3. Jane, I., McKinnon, A., and Flanagan, R. (1985). HPLC analysis of basic drugs on Silica columns using non-aqueous ionic elements. II. Application of UV, fluorescence and electrochemical oxidation detection. *J. Chromatography*, 323, 191–225
4. Musch, G., De Smet, M., and Massart, D. (1985). Expert systems for pharmaceutical analysis: UV versus amperometric detection. *J. Chromatogr.*, 348, 97–110
5. Olea N, Pulgar R, Perez, P, Olea-Serrano F, Rivas A, Novillo-Fertrell A, Padranza V, Soto A, Sonnenschein C. Estrogenicity of resinbased composites and sealants used in dentistry. *Environ. Health Perspect.*, 1996; **104**: 298-305.
6. Manabe A, Kaneko S *et al.* Detection of bisphenol A in dental materials by gas chromatography- mass spectrometry. *Dent. Mater. J.*, 2000; **19**: 75-86.