



# Analysis of Effectiveness and Pressure Drop in Micro Cross-flow Heat Exchanger With steady state thermal analysis

## KEYWORDS

Micro Cross flow heat exchanger, effectiveness, pressure drop, Heat transfer rate, thermal analysis

**Hiteshgi Goswami**

Student (M Tech.) , R K University,Rajkot

**Prof. Jiten Makadia**

Asst.Professor, R K University, Rajkot

**ABSTRACT** Micro heat exchanger is an extremely high efficiency, cross flow, fluid-fluid, micro heat exchanger formed from high aspect ratio microstructures. To concurrently achieve the goals of high mass flow rate, low pressure drop, and high heat transfer rates, one embodiment of the micro heat exchanger comprises numerous parallel, but relatively short micro channels. The performance of these heat exchangers is superior to the performance of previously available heat exchangers, as measured by the heat exchange rate per unit volume or per unit mass. Typical gas channel lengths in the micro heat exchangers are from a few hundred micrometers to about 2000 micrometers, with typical channel widths from around 50 micrometers to a few hundred micrometers, although the dimensions in particular applications could be greater or smaller. The novel micro heat exchangers offer substantial advantages over conventional, larger heat exchangers in performance, weight, size, and cost.

## INTRODUCTION

A heat exchanger is a thermal device that transports energy by heat transfer between moving fluids at different temperatures. Heat exchangers are widely used in many different applications and industries worldwide, varying from space, energy, heating, ventilation and air conditioning, and transportation. A radiator for cooling a car or truck engine, and a condenser for an air conditioner are typical heat exchangers in the automobile industry.

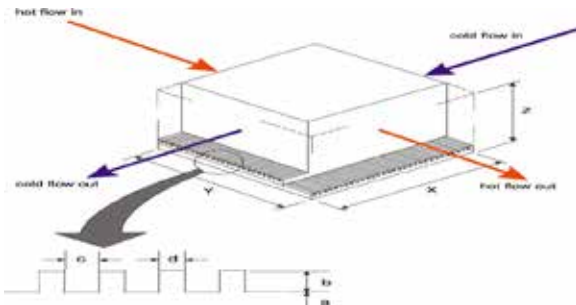


Figure 1: Plate-type cross-flow micro heat exchanger.

## PRESSURE DROP & EFFECTIVENESS CALCULATION FORMULA

The hydraulic diameter of the channel can be expressed as

$$D_h = \frac{4 * bc}{2(b+c)}$$

The constant wall temperature Nusselt number can be written as

$$Nu_t = \frac{hD_h}{k_f}$$

the heat transfer coefficient can be find as following

$$h_1 = \frac{kf_1 NuT}{D_h}$$

$$h_2 = \frac{kf_2 NuT}{D_h}$$

Pressure drops of the hot and cold flow sides are

$$DP_1 = \frac{f_1 G_1^2 Y}{D_h (2gc) \rho_1}$$

$$DP_2 = \frac{f_2 G_2^2 Y}{D_h (2gc) \rho_2}$$

where

$$f_1 = 96[1-1.3553(c/b)+1.9467(c/b)^2-1.7012(c/b)^3+0.9564(c/b)^4-0.2537(c/b)^5]/Re_1$$

$$f_2 = 96[1-1.3553(c/b)+1.9467(c/b)^2-1.7012(c/b)^3+0.9564(c/b)^4-0.2537(c/b)^5]/Re_2$$

The mass velocity is

$$G_1 = m_1 / Ac_1$$

$$G_2 = m_2 / Ac_2$$

The effectiveness of the heat exchanger is

$$\varepsilon = 1 - \exp[-(1/Cr) (NTU)^{0.22} \{ \exp - Cr(NTU)^{0.7} - 1 \}] \quad Cr = C_{min} / C_{max}$$

$$m_1 = \sqrt{\frac{h_1 * 2(d_1 + y)}{k_s * d_1 y}}$$

$$m_2 = \sqrt{\frac{h_2 * 2(d_2 + y)}{k_s * d_2 y}}$$

$$d_1 = \frac{X - [N_1 / (Z/2a + 2b)] * c}{N_1 / (Z/2a + 2b) + 1}$$

$$d_2 = \frac{X - [N_2 / (Z/2a + 2b)] * c}{N_2 / (Z/2a + 2b) + 1}$$

the fin efficiency is

$$\eta_{f2} = \frac{\tanh(m_1 * b/2)}{m_1 * b/2}$$

$$\eta_{f2} = \frac{\tanh(m_2 * b/2)}{m_2 * b/2}$$

The total heat transfer area of the hot and the cold flow side is

$$A_{t1} = N_1 A_{f1} + A_{b1}$$

$$A_{t2} = N_2 A_{f2} + A_{b2}$$

where the surface area of heat sink is

$$A_{f1} = (b/2) * 2 * y \quad A_{f2} = (b/2) * 2 * y$$

The mean area of heat sink is

$$A_{b1} = N_1 c Y$$

$$A_{b2} = N_2 c Y$$

The overall thermal conductance (AtU) is

$$A_t U = \frac{1}{1/(\alpha_1 X Y Z h_1 \eta_{01}) + 1/(\alpha_2 X Y Z h_2 \eta_{02})}$$

$$NTU = \frac{A_t U}{C_{\min}}$$

Therefore the overall efficiency of fin array is

$$\eta_{01} = 1 - \frac{N_1 A_{f1}}{A_{t1}} (1 - \eta_{f1})$$

$$\eta_{02} = 1 - \frac{N_2 A_{f2}}{A_{t2}} (1 - \eta_{f2})$$

The first portion of the procedure involves determining the two ratios. The first ratio is the total heat transfer area on one side of the exchanger to the total volume of the exchanger a. The second ratio is the total heat transfer area on one side of the exchanger to the volume between the plates on that side b, expressed as

$$\alpha_1 = \frac{b \beta_1}{2a + 2b}$$

$$\alpha_2 = \frac{b \beta_2}{2a + 2b}$$

and

$$\beta_1 = \frac{N_1 * [(2b + 2c)] * Y}{XYZ * \frac{b}{2b + 2a}}$$

$$\beta_2 = \frac{N_2 * [(2b + 2c)] * Y}{XYZ * \frac{b}{2b + 2a}}$$

**SAME EFFECTIVENESS, DIFFERENT AVERAGE TEMPERATURE**

**TABLE - 1**  
**TEMPERATURE PARAMETERS AND FLOW RATE OF THE SAME EFFECTIVENESS**

$\epsilon$	Thi °(C)	Tho (C)	Tci (C)	Tco °(C)	$\dot{m}_{Si}$ (kg/s)	$\dot{m}_{Cu}$ (kg/s)	Ta °(C)
0.3	40	30	10	20	0.03	0.063	25
0.3	50	40	20	30	0.01	0.062	35
0.3	60	50	30	40	0.07	0.069	45
0.3	70	60	40	50	0.06	0.071	55
0.3	80	70	50	60	0.07	0.072	65

**TABLE - 2**  
**TEMPERATURE PARAMETERS AND FLOW RATE OF THE DIFFERENCE EFFECTIVENESS**

$\epsilon$	Thi °(C)	Tho °(C)	Tci °(C)	Tco °(C)	$\dot{m}_{Cu}$ (kg/s)
0.167	80	70	20	30	0.1803
0.333	80	60	20	40	0.0701

0.500	80	50	20	50	0.0334
0.667	80	40	20	60	0.0144
0.833	80	30	20	70	0.0027

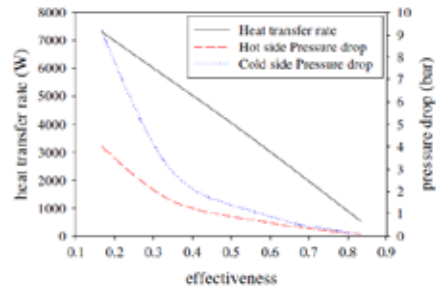


Figure 2 : Relationship of the pressure drop and the heat transfer rate in the difference effectiveness (b = 10<sup>5</sup>/3).

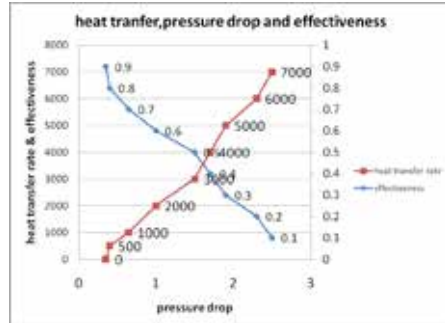


Figure 3 : Relationship of the pressure drop and the heat transfer rate in the difference effectiveness (b = 10<sup>5</sup>/3).

The inflow temperatures of the hot and cold side were fixed, and the outflow temperatures were changed, the temperature settings show in Table 2. The effectiveness range was adjusted between 0.167 and 0.833. The influence of the different effectiveness is illustrated in the Figs. 2 and 3.

From Fig. 3 the effectiveness of the heat exchanger was increased, the working fluid flow rate will reduce in order to increase the heat exchange time. The flow rate will reduce from 0.1764 to 0.0026 kg/s. It will cause the heat transfer rate reduce because of the reducing of the flow rate. The variation of the pressure drop is violent when the effectiveness is below 0.4, and gradual when the effectiveness is above 0.4.

From Fig. 3, under the same heat transfer rate and effectiveness, enlarging dimension will cause pressure drop to reduce substantially. Overall, the heat transfer rate does not rise very much. When the effectiveness is below 0.4, enlarging dimension has a good suitable range, because the variation in the pressure drop is small.

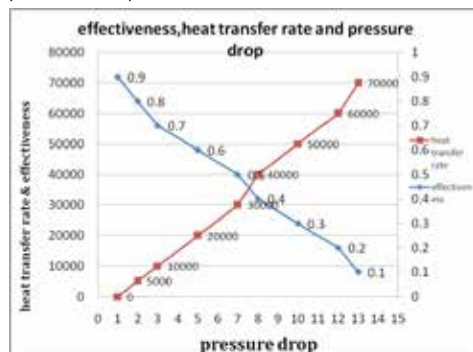


Figure 4 : Relationship of the pressure drop and the heat transfer rate in the difference effectiveness, X, Y, Z, a, b, c, d enlarge the double times (b = 10<sup>5</sup>/6).

**DIFFERENT EFFECTIVENESS, AVERAGE TEMPERATURE 50°C**

Fig. 4 and 5 utilize table 1 to indicate the relationship between the pressure drop, heat transfer rate and the different average temperature of the hot and cold side in silicon based micro heat exchanger, and the effectiveness is 0.333. The average temperature is the average value of the entrance and exit fluid temperature of the hot and cold side. From Fig. 4, under the same level of the effectiveness, the major influence of the heat transfer rate on the working fluid is the fluid average temperature. And the heat transfer rate has the trend increasing with the rising of the average temperature. Conversely, the pressure drop decreases. The heat transfer rate increases because of the increase in the working fluid flow rate. Although the increase of the working fluid flow rate and whole temperature allows the working fluid density to decrease, the inside pressure drop of the micro channels then increases. However, the rising temperature causes the fluid viscosity to decrease and the pressure drop of the heat exchanger then reduces. Under the same flow rate of the hot and cold side channels, the cold side pressure drop is larger than hot side.

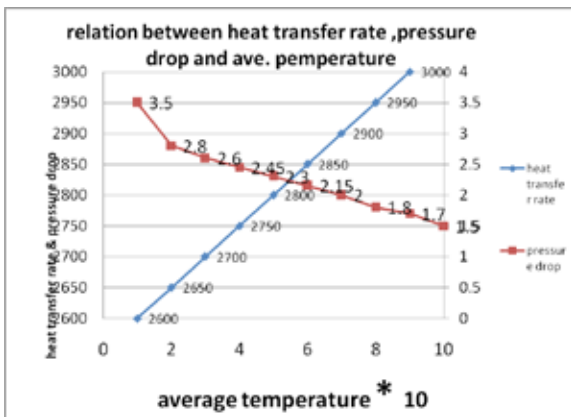


Figure 5 : Relationship of the pressure drop and the heat transfer rate in the different average temperature and the effectiveness is 0.333 (b = 10<sup>5</sup>/3)

**THERMAL ANALYSIS RESULTS**

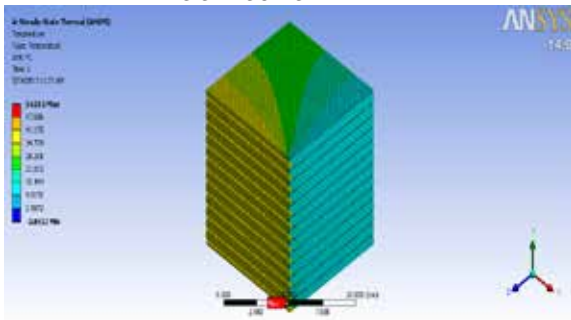


Figure 6 : temperature contour for hot water 40° and cold water 10°

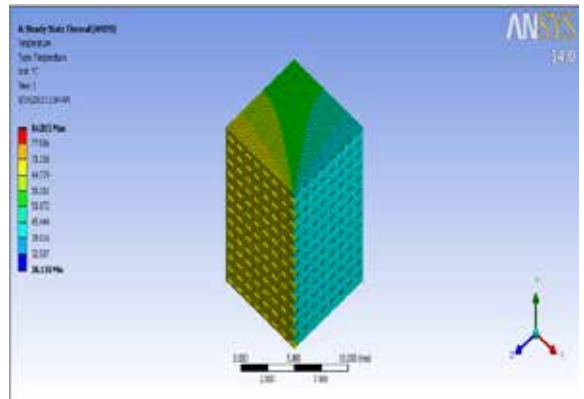


Figure 7 : temperature contour for hot water 70° and cold water 40°

Figure 6 and 7 shows temperature variation across the micro cross flow heat exchanger when hot fluid temperature changes from 40° to 70° with respect to cold temperature from 10° to 40°.

**CONCLUSION**

This study used the fundamental heat transfer and fluid flow equations to establish a theoretical model for a micro heat exchanger in this paper. And it utilized Ref. [3], the (11 0) orientation silicon based micro heat exchanger made using the MEMS fabrication process. The design dimensions and temperature parameters were substituted into the theoretical model to verify the design. This study examined the interactive effect between the effectiveness of the heat exchanger and pressure drop of the micro channels. Key findings from this study are as follows:

- (1) Under the same effectiveness, the heat transfer rate increases with rising working fluid temperature in the hot and the cold flow side. The pressure drop decreases because of the temperature influence, especially on the cold flow side. And the higher average temperature situation has the larger heat transfer rate.
- (2) Under the different effectiveness, the heat transfer rate and pressure drop decrease with the increase in effectiveness. Contrasting the increasing magnitude of the pressure drop, the cold flow side is larger than the hot flow side. At this time, the better heat transfer rate is in the low effectiveness situation.
- (3) With the dimensions enlarged two times and the outer dimensions enlarged two times, there are advantages and disadvantages in the pressure drop and the heat transfer rate. The designer can choose the appropriate plan by their requirement.

**REFERENCE**

[1] Friedrich C.R. and S.W. Kang, "Micro heat exchangers fabricated by diamond machining", Precision Engineering 16 (1994) 56-59. || [2] Jiang X.N., J.Y. Zhou, Y.L. Yao, and X.Y. Ye, "Micro-fluid flow in micro channel", Proc. Transducers 95 (1995) pp. 317- 320. || [3] Kang S.W., Y.T. Chang, and G.S. Chang, "The manufacture and test of (110) orientation silicon based micro heat exchanger", Tamkang Journal of Science and Engineering 5 (3) (2002) 129-136. || [4] Kays W.M., and A.L. London, "Compact Heat Exchangers", third ed., McGraw Hill Co., NY, USA, 1964. || [5] Mala G.M., and D. Li, "Flow characteristics of water in micro tubes" Int. J. Heat Fluid Flow 20 (1999) pp. 142-148. || [6] Papautsky I., B.K. Gale, S. Mohanty, T.A. Ameel, and A.B.Frazier, "Effects of rectangular microchannel aspect ratio on laminar friction constant" SPIE 3877 (1999) pp. 147-158. || [7] Raznjevic K., "Handbook of Thermodynamic Tables and Charts", McGraw Hill Co., NY, USA, 1976. || [8] Shah R.K., and A.L. London, "Laminar Flow Forced Convection in Ducts", Academic Press, London, 1978. || [9] Tuckerman D.B., "Heat-Transfer Micro-structures for Integrated Circuits", Ph.D. Thesis, Department of Electronic Engineering, Stanford University, USA, 1984. || [10] Weilin Q., G.M. Mala, and L. Dongqing, "Pressure-driven water flows in trapezoidal silicon microchannels" Int. J. Heat Mass Transfer 43 (2000) pp. 353-364. || [11] Wilding P., M.A. Shoffner, and L.J. Kircka, "Manipulation and flow of biological fluids in straight channels micro machined in silicon" Clin. Chem. 40 (1994) pp. 43-47. |