



Modelling COD And DO Concentration By Using Adaptive Neuro-Fuzzy Inference System (ANFIS)

KEYWORDS

Adaptive Neuro-Fuzzy Inference System, Chemical Oxygen Demand(COD), Dissolved Oxygen(DO)

Jayesh S. Patel

M.E Water Resource Management, 4th Semester, Department of Civil Engineering, Dr.S&S.S Ghandhy, GEC Surat, Gujarat, India

Dr. S. S. Singh

Associate Professor, Department of Civil Engineering, GEC Surat, Gujarat, India

ABSTRACT Dissolved oxygen (DO) & COD is a parameter frequently used to evaluate the water quality on different rivers. The aim of the present study is to investigate applicability of artificial intelligence techniques such as ANFIS (Adaptive Neuro-Fuzzy Inference System) in water quality DO & COD prediction for the case study, Mahi river at Khanpur in Thasara Taluka of Kheda District in Gujarat State, India. The proposed technique combines the learning ability of neural network with the transparent linguistic representation of fuzzy system. ANFIS models with various input structures and membership functions are constructed, trained and tested to evaluate efficiency of the models. Statistical indices such as Root Mean Square Error (RMSE), Correlation Coefficient (R), Coefficient of Determination (R²) and Discrepancy Ratio (D) are used to evaluate performance of the ANFIS models in forecasting DO & COD. ANFIS model is used for the estimation of DO & COD concentration.

INTRODUCTION

Using the surface waters for the purpose of suitable and safely requires the determination of the water quality. To determine water quality is very important issue for drinking and irrigation water, and many other purposes. A mathematical model is a set of mathematical expressions, relationships and logic rules that mimic the behavior of a physical process. Modern artificial intelligence methods such as neuro-fuzzy systems can be used for forecasting. These methods provide fast, reliable and low-cost solutions. Another advantage of these methods is that they can handle dynamic, non-linear and noisy data, especially when the underlying physical relations are very complex and not fully understood. The purposes of this study are to investigate the applicability of ANFIS in predicting Water Quality parameters like COD, DO in the Mahi River.

DO & COD are a parameter frequently used to evaluate the water quality on different rivers. To estimate COD & DO accurately, inclusion of all past data is essential in this ANFIS model. In the present study to develop ANFIS model, past discharge, pH, temperature, EC, suspended solids, DO and COD of study area ANFIS models with various input structures and membership functions are constructed, trained and tested to evaluate efficiency of the models. Statistical indices such as Root Mean Square Error (RMSE), Correlation Coefficient (R), Coefficient of Determination (R²) and Discrepancy Ratio (D) are used to evaluate performance of the ANFIS models in estimation of COD & DO concentration.

STUDY AREA

The study area of Mahi river basin is located near village Khanpur in Thasara taluka of district Kheda in Gujarat State, India. The latitude and longitude of the study area are 22° 53' N and 73° 13'E, respectively. The type of bed of river is rocky covered with sand.

The basin is comprised of two sub-basins: Mahi upper sub basin (65.11% of total basin area) consisting of 41 watersheds and Mahi lower sub basin (34.89% of total basin area) consisting of 22 watersheds. The Mahi river and its

tributaries constitute an inter-state river system flowing through the states of Madhya Pradesh, Rajasthan and Gujarat. Mahi river is comprised of several tributaries on both the banks, viz. Som, Anas, Panam and others.

For this study, monthly discharge, pH, temperature, EC, suspended solids, DO & COD and data are collected for estimation of DO & COD of Mahi River.

METHODOLOGY

Adaptive Network-Based-Fuzzy Inferences System (ANFIS) approach was employed in this study.

The ANFIS architecture consists of 5 layers such as input layer, fuzzification layer, inferences process, defuzzification layer, and summation as final output layer. Typical architecture of ANFIS is shown by Figure 1.

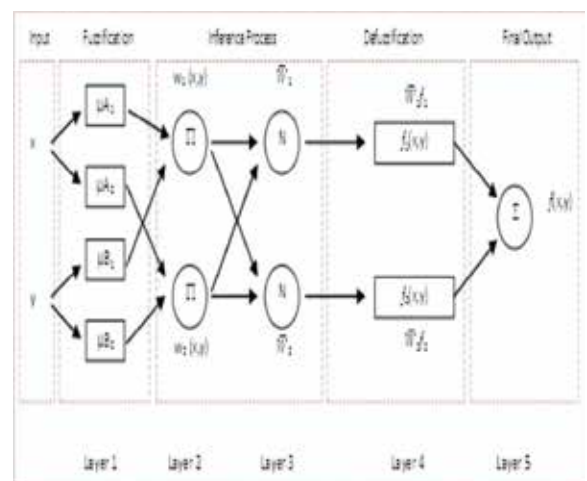


Figure 1: Typical Architecture of ANFIS

In above architecture the process flows from layer 1 to layer 5. It is started by giving a number of sets of crisp values as input to be *fuzzified* in layer 1, passing through infer-

ence process in layer 2 and 3 where rules applied, calculating output for each corresponding rules in layer 4 and then in layer 5 all outputs from layer 4 are summed up to get one final output.

The main objective of the ANFIS is to determine the optimum values of the equivalent fuzzy inference system parameters by applying a learning algorithm using input-output data sets. The parameter optimization is done in such a way during training session that the error between the target and the actual output is minimized. Parameters are optimized by hybrid algorithm which combination of least square estimate and gradient descent method. The parameters to be optimized in ANFIS are the premise parameters which describe the shape of the membership functions, and the consequent parameters which describe the overall output of the system. The optimum parameters obtained are then used in testing session to calculate the prediction.

The objectives for the study are,

- i. Development of river stage-DO & COD concentration ANFIS model.
- ii. Validation of the formulated model.
- iii. Performance evaluation of the formulated model for the Mahi river system.

In this study, basic model is constructed by 2 inputs and 1 output. The inputs for DO are discharge, pH, EC, temperature and DO while for the output is predicted DO. For COD, inputs are temperature, discharge, pH, suspended solids, COD while for the output is predicted COD. In this ANFIS model 70% data is used for Training and 30% data is used for Validation. After load the data in ANFIS Editor the Fuzzy Inference System (FIS) is generated with taking 5 number of linear triangular membership function.

The model is validated on the remaining 30% of the data by evaluating the following statistic performance indicators: Root Mean Square Error (RMSE), Correlation Coefficient (R), Coefficient of determination (R^2) and Discrepancy Ratio (D) which is given below:

Root mean square error (RMSE):

$$RMSE = \sqrt{\frac{\sum_{i=1}^n (X(i) - \bar{X}(i))^2}{n}}$$

Correlation coefficient:

$$R = \frac{\sum_{i=1}^n (X(i) - \bar{X})(\hat{X}(i) - \bar{\hat{X}})}{\sqrt{\sum_{i=1}^n (X(i) - \bar{X})^2 \sum_{i=1}^n (\hat{X}(i) - \bar{\hat{X}})^2}}$$

Coefficient of determination:

$$R^2 = \frac{(\sum_{i=1}^n (X(i) - \bar{X})(\hat{X}(i) - \bar{\hat{X}}))^2}{\sum_{i=1}^n (X(i) - \bar{X})^2 \sum_{i=1}^n (\hat{X}(i) - \bar{\hat{X}})^2}$$

Discrepancy Ratio (D):

$$D = \frac{\sum_{i=1}^n \hat{X}(i)}{\sum_{i=1}^n X(i)}$$

Where (i) is the n estimated value, X(i) is the n observed value, \bar{X} is the mean of the observed values, and $\bar{\hat{X}}$ is the mean of the estimated values.

RESULT AND ANALYSIS

70% data is used for Training and 30% data is used for Validation. The results obtained from ANFIS are shown below:

ANFIS (DO)

The Training data results for DO for ANFIS is shown below in fig.2 and fig.3.

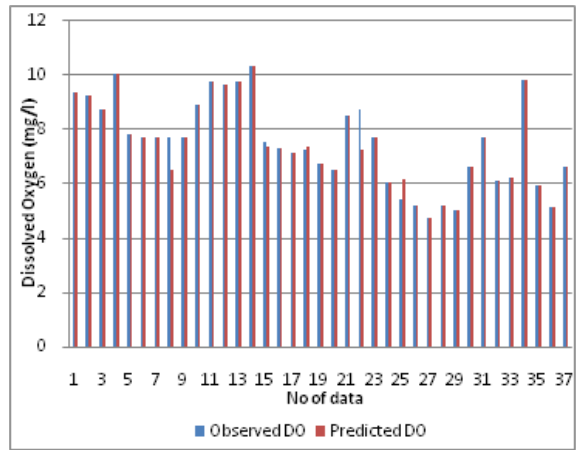


Fig.2 Comparison of observed & predicted DO for Training using ANFIS

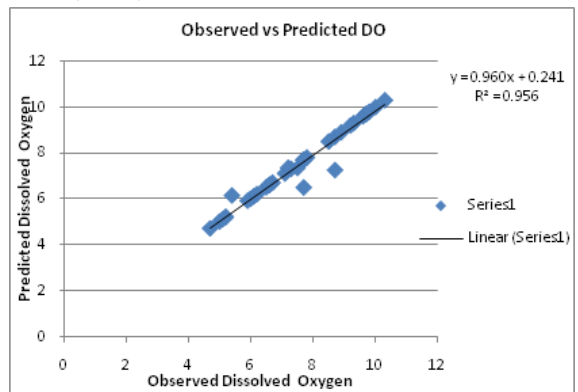


Fig.3 Scatter plot for Observed vs Predicted DO for Training using ANFIS

The Validation data results for DO for ANFIS is shown below in fig.4 and fig.5.

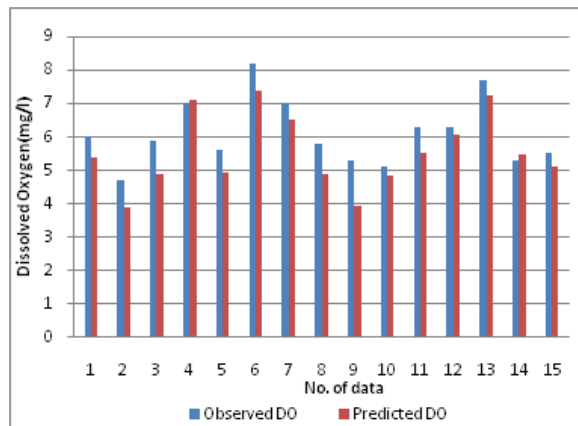


Fig.4 Comparison of observed & predicted DO for Validation using ANFIS

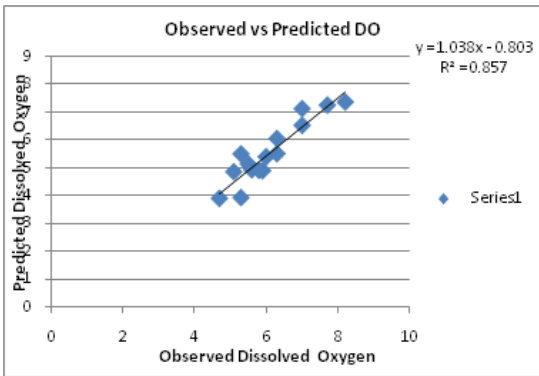


Fig.5 Scatter plot for Observed vs Predicted DO for Validation using ANFIS

The forecast accuracy of model using ANFIS Tool was evaluated by calculating the following statistic performance indicators: Root Mean Square Error (RMSE), Correlation Coefficient (R), Coefficient of determination (R^2) and Discrepancy Ratio (D) described in Table I.

TABLE I PERFORMANCE EVOLUTION OF MODEL ON TRAINING AND VALIDATION PERIOD FOR ANFIS MODEL (DO)

		RATIO 70-30 %			
STATION	PHASE	RMSE	CORRELATION (R)	R^2	DECRIP-ENCY RATIO
KHAN-PUR	Training	0.335406	0.977829	0.956149	1.006987
	Validation	0.698622	0.925935	0.857355	1.102561

ANFIS (COD)

The Training data results for COD for ANFIS is shown below in fig.6 and fig.7.

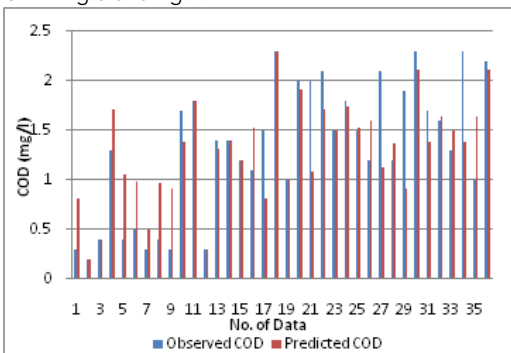


Fig.6 Comparison of observed & predicted COD for Training using ANFIS.

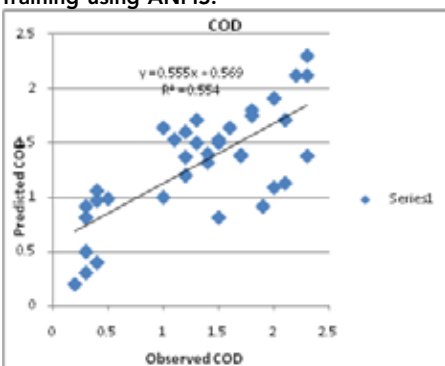


Fig.7 Scatter plot for Observed vs Predicted COD for Training using ANFIS

The Validation data results for COD for ANFIS is shown below in fig.8 and fig.9.

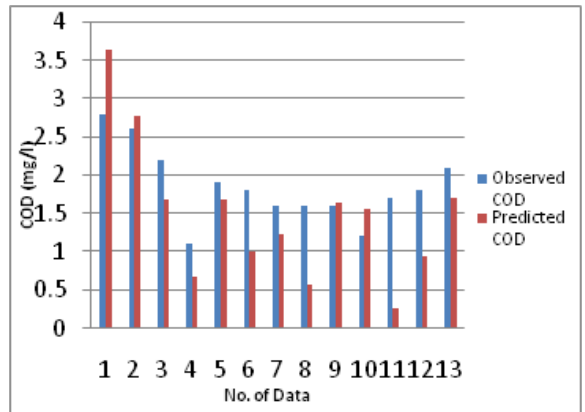


Fig.8 Comparison of observed & predicted COD for Validation using ANFIS

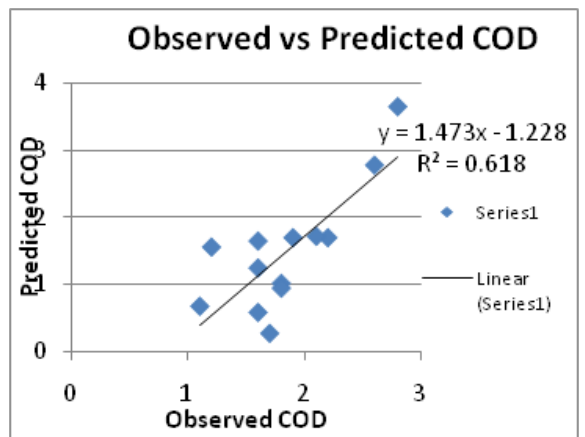


Fig.9 Scatter plot for Observed vs Predicted COD for Validation using ANFIS

The forecast accuracy of model using ANFIS Tool was evaluated by calculating the following statistic performance indicators: Root Mean Square Error (RMSE), Correlation Coefficient (R), Coefficient of determination (R^2) and Discrepancy Ratio (D) described in Table II.

TABLE II PERFORMANCE EVOLUTION OF MODEL ON TRAINING AND VALIDATION PERIOD FOR ANFIS MODEL (COD)

		RATIO 70-30 %			
STATION	PHASE	RMSE	CORRELATION (R)	R^2	DECRIP-ENCY RATIO
KHAN-PUR	Training	0.20996	0.744762	0.554670	1.012685
	Validation	0.684924	0.786231	0.618159	1.237688

CONCLUSION

In this study, an Adaptive Neuro-Fuzzy Inference System (ANFIS) model has been developed to concentrate DO & COD of Mahi river near Khanpur.

Dissolved oxygen (DO) & chemical oxygen demand (COD) concentration has traditionally been used as a variable of

water quality and for water systems. Therefore, modeling of water quality parameters is a very important aspect. The chemical, physical, and biological components of aquatic ecosystems are very complex and nonlinear. In recent years, computational-intelligence techniques such as neural networks, fuzzy logic, genetic algorithm, and combined neuro-fuzzy systems have become very effective tools to identification and modeling nonlinear systems.

The ability of ANFIS model in estimation of DO & COD water quality parameter has been investigated in this study. Results of simulation presented in this research showed that the values of RMSE, R^2 , CORRELATION, DE-CRIPENCY RATIO. ANFIS (4, trapmf, constant) is best suited among other trials.

The results showed that the temperature (T) is the most effective parameter to estimate DO & COD concentration in this stream-gauging station. ANFIS model can be successfully used in estimation of DO & COD when only temperature data are available.

Acknowledgment

The authors gratefully acknowledge to **SWDC** department for providing us the vital information in carrying out this research work.

REFERENCE

- [1] Benyahya L , Hilaire A S, Quarda B M J T, Bobee, B , Nedushan B A: Modeling of water temperatures based on stochastic approaches: case study of the Deschutes River. *Journal of Environmental Engineering Science* (2007), 6: 437–448. | [2] Chang F J, Chang Y T: Adaptive neuro-fuzzy inference system for prediction of water level in reservoir. *Advances in Water Resources* (2006), 29: 1–10. | [3] Jang J S R: ANFIS: adaptive network based fuzzy inference system. *IEEE Transactions on Systems, Man, and Cybernetics* (1993), 23(3): 665–685. | [4] Zou Z H, Yun Y, Sun J H: Entropy method for determination of weight of evaluating indicators in fuzzy synthetic evaluation for water quality assessment. *Journal of Environmental Sciences* (2006), 18(5): 1020–1023. | [5] W.R. Hann and R.G. Wiley: *Water Quality Determinations*. US Army Corps of Engineers Institute for Water Resources HEC (USACE), HEC-1HD Volume 11(1972). | [6] M.Radwan, P.Willems, and J.Berlamomnt: "Modeling of dissolved oxygen and biochemical oxygen demand in river water using a detailed and simplified model," 2nd ed. *River Basin Manage* (2003), pp. 97–103. | [7] R. J. Williams, C. White, M.L. Harrow, and C. Neal: Temporal and small-scale spatial variations of dissolved oxygen in the Rivers Thames, Pang and Kennet, UK. *Science Total Environmental*(2000), 251/252, 497-510. | [8] M. Spanou, and D. Chen: An object-oriented tool for the control of point-source pollution in river systems. *Environmental Modelling Software* (1999) 15, 35-54. | [9] B.A. Cox: A review of dissolved oxygen modeling techniques for lowland rivers. *Science Total Environmental* (2003), 314-334. | [10] J.S. R. Jang: ANFIS: Adaptive-Network-based Fuzzy Inference Systems. *IEEE Transactions on Systems, Man, and Cybernetics* (1993), 23(3), 665-685. |