



# Fault Protection in HvdC Grid Using Voltage Source Converter

## KEYWORDS

Circuit Breaker, HVDC Grid, Multi-terminal, Voltage Sourced Converter.

**K. Jayavelu**

Assistance Professor, Jeppiaar Institute of Technology, Sriperumbudur, Chennai, India

**Dr.C.Rajeshkumar**

Associate Professor, Jeppiaar Institute of Technology, Sriperumbudur, Chennai, India

## ABSTRACT

*Conventional Voltage Source Converters (VSC) cannot interrupt DC fault currents and DC circuit breakers are not yet commercially available for HVDC power ratings. Thus, the protection of VSC-HVDC systems is still an obstacle for the development of this technology. The features of VSC-HVDC systems make them suitable for implementing HVDC grids. Nevertheless, HVDC grids are more complex than point-to-point links. Accordingly, the fault protection of these HVDC grids is a bigger challenge due to the specific requirements of DC grids. Nowadays there is no real HVDC grid operating, but it is expected that in the near future HVDC grids will be widespread, rearing the predominant AC systems. In this paper, the protection required by HVDC grids is thoroughly analyzed.*

## 1. Introduction

Most HVDC systems are point-to-point links where a certain amount of energy is exchanged. Nevertheless, there are a few HVDC multi-terminal (MT) systems which have been operating for a significant interval, i.e. Italy – Corsica – Sardinia transmission and Quebec – New England transmission. Both schemes, which are based on Line Commutated Converters (LCC) technology, have three operating converters.

However, last years, a new technology has emerged, VSC-HVDC, with new capabilities (independent and fast control of active and reactive power, black-start capability, etc.) which make this option more suitable for new applications. One of the most relevant applications is the multi-terminal schemes, due to the fact that the power flow is reversed changing the current and not the voltage as in the case of classical LCCs. Thus, the reversal is easier than in LCC technology. However, the reliable protection of VSC-HVDC systems is still a challenge [1], mainly, due to the fact that DC fault currents must be detected and extinguished in a short time. In fact, the overcurrent withstand capability of VSCs is extremely limited.

DC grids are suitable, among other uses, for offshore systems due to the problems related to long AC cables and to connect remote renewable power resources [2]. This way, there are projects for DC grids which will interconnect wind power in the North and Baltic Sea and solar power in North Africa and Medium East [3][4]. In 2013, the first multi-terminal VSC-HVDC system, based on MMC technology, has been commissioned in China, with design ratings of  $\pm 160$  kV - 200/100/50 MW, and a succession of underground, undersea and overhead lines. The system has the objective of integrating the wind power generated in Naoao island into the inland power system.

## 2. HVDC Grid Features

Multi-terminal systems consist of three or more converters which are interconnected creating a HVDC network. Nevertheless, it is not so obvious what conditions have to be met by DC grids. The European Association "Friends of the Supergrid" defines the Supergrid as "an electricity transmission system, mainly based on direct current, designed to facilitate large-scale sustainable power gen-

eration in remote areas for transmission to centers of consumption, one of whose fundamental attributes will be the enhancement of the market in electricity".

This way, the DC grid will be able to integrate large renewable resources. It will also include medium scale storage and backup devices connected to the AC grid and distributed energy resources connected to the distribution network [5]. Definitely, the Super grid will constitute an intelligent system to manage the energy demand, variable sources and storage. For that purpose, it will be necessary a real time communication system.

HVDC technology has several interesting characteristics, this way, DC Converters increase the controllability and improve the dynamics of both, AC and DC grids [6]. It must not be forgotten that there is an interaction between the DC grid and the extensive AC grid. Therefore, multi-terminal systems increase power system stability during faults and reliability of both grids. Moreover, AC grid can be separated into zones with the objective of avoiding the spreading of faults and cascading blackouts.

### A. DC Network topologies

There are different MT topologies to develop a DC grid. The most common ones are radial and meshed grid designs. These topologies must be compared and evaluated in terms of overall system losses, transient fault currents, and post-fault contingencies in order to determine which one has higher benefits. No DC topology can optimally satisfy all aspects at the same time, so case by case analysis must be done, for every network and power flow scenario [7]. For a reference generation scenario in 2030, meshed designs showed to have a small economic advantage over a radial approach [5].

### B. Development of DC Grids

Nowadays, most of the HVDC systems installed all around the world have been implemented freely by each manufacturer. It is logic that the construction of DC grids starts connecting some of the existing DC links to each other, as the setting up of the preliminary steps. Thus, the different systems will have to be adapted between them. In that sense, for the efficient development of a DC grid, it would be really helpful to have some standards. This way,

if the following concepts are clarified, the planning criteria for different manufacturers could be resembled and the development of the DC grid would be eased [5]:

#### **DC voltage levels.**

#### **DC grid topologies.**

*Fault behavior:* short circuit currents of converter stations and location of fault clearing devices, at each converter station or at each DC feeder.

*Power system protection:* differentiation between normal transients and faults, relays and communication to selectively detect faults and fault clearing mechanisms, including fault current and overvoltage limitation.

*Converter control and protection:* sequences for start-up and shut-down, converter station control.

#### **HVDC grid controls**

Observing the aforementioned facts, it is obvious that the protection and control strategies for the different converters of the grid are still a huge obstacle for building future HVDC grids.

### **3. Protection of HVDC Grids**

Grids are more demanding than point-to-point links, both in AC and DC systems. Anyway, the protection of DC systems is a more demanding task, mainly because of the absence of natural current zero crossing. Besides, VSC-HVDC converters are highly sensitive to over currents. The main features of a DC or AC grid protection system are following detailed [2]:

*Sensitivity:* accurate detection of any fault without exception.

*Selectivity:* discrimination between normal operation and fault condition. Therefore, protections should only operate in case of fault, and just if the fault is located in its own coverage domain.

*Speed:* the faults must be interrupted before they can damage equipment or can no longer be interrupted by the circuit breakers.

*Reliability:* reliable operation and a backup system in case of failure of the primary protection system.

*Robustness:* fault detection in normal mode and in degraded mode. Discrimination of faults from any other operation occurring (set point changes, operations, etc.)

*Seamless:* after clearing the fault, the remaining part of the system should continue operating securely.

Conventional AC side CBs usually protect VSC-HVDC links, nevertheless these devices are not suitable for protecting HVDC grids. AC CBs require the de-energization of the entire system which would result in an unacceptably large loss of in feed, and this is not feasible for a DC grid. For a reliable protection, HVDC grids require a fast and selective isolation of the faulted line, in order that the remaining lines can continue operating normally [8].

Following the most relevant features for the protection of DC grids are analyzed.

#### **A. Control**

There are different control strategies available. In order to

choose the most effective strategy, the grid topology is a major consideration.

For instance, in the case of parallel MTDC systems, the basis of the control goal is to maintain a constant DC voltage and power balance [9]. Whereas in radial HVDC grid systems, the power flow through each line can be controlled by the DC voltages of the individual converter stations [5].

In the case of meshed systems, they have more than one line connecting two converter stations, at least partly. In these systems, the flow through parallel paths depends on the DC voltage at the converter stations and on the line impedances. Thus, such systems may need additional DC Line Power Flow Controllers to achieve a required power flow. DC Line Power Flow Controllers will insert a certain DC voltage in series with the line, in order to control the current. DC Line Power Flow Controllers are still under development.

#### **B. Detection**

Fault detection and location is important, especially on multi terminal systems, in order to isolate the fault in a short time and restore the system as soon as possible [1].

The main issues of fault location are: fault resistance and grounding. The fault resistance can change from zero to dozens of ohms, which has influence over the location of the fault. Besides, regarding the type of neutral grounding, MTDC systems can be divided into two categories: grounding (including high-resistance grounding) and non-grounding systems [10][11]. The non-grounding systems can be used for a better reliability of power supply in pole-to-ground faults. Just like in AC systems, those issues have different fault responses.

Fault location plays two important roles in power system. On the one hand, the identification of fault section should be quick to initiate the relay protection system in a short time and thus, avoid the loss caused by overcurrent. On the other hand, the identification of the specific fault point should be remarkably accurate [12].

Finally, fault detection and location with sensitivity and selectivity in HVDC grids is an important hurdle mainly because the reaction time available is extremely small, typically 1-2 ms, before the fault current level is so high that it is difficult to interrupt. A solid methodology must be developed.

#### **C. Coordination**

Converters in a HVDC grid must be well coordinated in order to maintain the power balance, satisfactory power transmission and a solid DC voltage [13].

When a short circuit appears in a HVDC grid, the fault will propagate through the DC circuit and appear at every converter station as a sudden DC voltage drop. Therefore, the protection systems of the converter stations will respond accordingly interrupting the fault current and isolating the faulty section. Thus, a fast communication system between the converter stations is required to provide selective fault isolation. Afterwards, the remaining system can recover fast. Selective protection systems for HVDC grids are currently under development [5].

#### **4. DC Circuit Breakers**

Nowadays, there are some technical limitations for creating a DC grid [14]. Several components must be developed

and available at competitive prices. Among them, DC circuit breakers are probably the most relevant ones. Therefore, before DC CBs are feasible for being employed in DC grids, several concepts must be improved [15], mainly in terms of on-state losses and breaking time.

A. Solid-State DC CB

Solid state DC CBs are based on quick semiconductor devices, such as IGBTs. The semiconductors are placed usually on the main current flow line, this way the operation times are very short but the on-state losses are rather high. In order to reduce those losses, some proposals use a fast mechanical switch in the main circuit, creating a hybrid CB (Fig. 1).

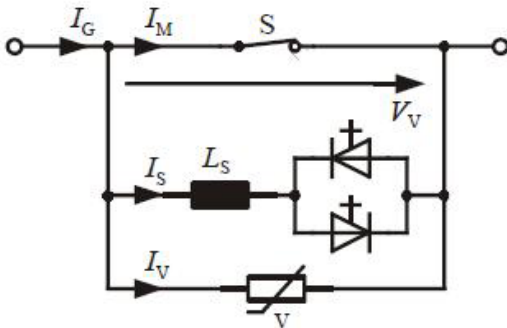


Fig. 1. Conventional Hybrid Circuit Breaker [17].

A typical hybrid solid-state DC CB consists of a fast mechanical switch in the main line, a parallel path composed of semiconductor devices which redirect the fault current from the main path, allowing the opening of the mechanical switch. In such manner that finally the fault current can be switched off [17]. Currently ABB is developing a hybrid solid-state DC CB which combines IGBTs with a mechanical ultra-fast switch [18].

B. DC/DC Converter

There are many feasible technologies for DC/DC converters, such as LCL thyristor (Fig. 2)[19] and DC/DC chopper (Fig. 3)[20], which have different applications. Aside from the evident function of interconnecting DC grids of different voltage levels, DC/DC converters have several distinct applications.

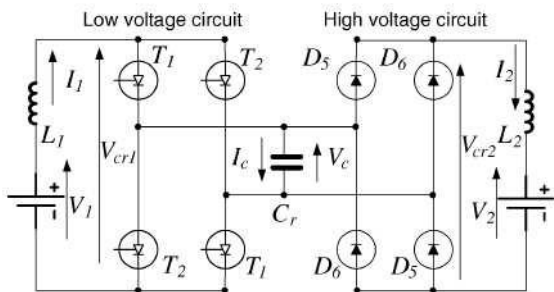


Fig. 2. DC/DC Converter, unidirectional step up converter [19].

In the case of DC grids, these devices can perform voltage stepping, DC power or DC voltage regulation, interface different technologies (i.e., LCC and VSC, monopolar and bipolar, etc.) and DC fault isolation [19]. This way, some DC/DC converters have capability to interrupt DC faults

without any control action or causing any overvoltage. But these devices have rather high losses during normal operation. In any case, this is a rather new research area and must be still developed.

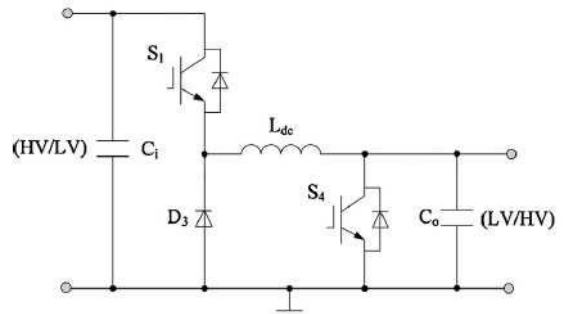


Fig. 3. DC chopper, two-switch topology [20].

5. Conclusion

The fault characteristics of a MT MMC-HVDC system are different from a point-to-point two-level VSC-HVDC. The control and protection of multi-terminal MMC-HVDC system are more complex, because the MT system must assure that when a fault appears in a zone the non faulted converters and lines maintain secure operation with the coordinated strategy between stations. This way, coordinated control method among converters is particularly relevant in MTDC systems. In fact, grid protection is one of the main difficulties of HVDC grids.

In general, fast fault clearing and active power recovery in case for DC faults is important to maintain power system integrity and stability. Actually, there is hardly any experience with fault handling in HVDC multi-terminal systems.

References

1. J. Candelaria, J.D. Park, "VSC-HVDC system protection: A review of current methods", in Power Systems Conference and Exposition (PSCE), 2011 IEEE/PES, Phoenix, March 2011.
2. D. Jovcic, D. Van Hertem, K. Linden, J.P. Taisne, W. Griegshaber, "Feasibility of DC Transmission Networks", in Innovative Smart Grid Technologies (ISGT Europe), 2011 2nd IEEE PES International Conference and Exhibition on, Manchester, Dec. 2011.
3. J. De Decker et al. "Offshore Electricity Grid Infrastructure in Europe". OffshoreGrid, Tech. Rep., 2011.
4. Desertec "Clean Power from Deserts. Whitebook", 2009. Available: [http://www.desertec.org/fileadmin/downloads/DESERTEC-WhiteBook\\_en\\_small.pdf](http://www.desertec.org/fileadmin/downloads/DESERTEC-WhiteBook_en_small.pdf)
5. M. Callavik et al, "Roadmap to the Supergrid Technologies", update report, june 2014.
6. D. Van Hertem, M. Ghandhari, M. Delimar, "Technical Limitations towards a SuperGrid – A European Perspective", in 2010 IEEE International Energy Conference (ENERGYCON 2010).
7. M. K. Bucher, R. Wiget, G. Andersson, C.M. Franck, "Multi-Terminal HVDC Networks - What is the Preferred Topology?", IEEE Trans. On Power Delivery: Special Issue on "HVDC Systems and technology", Vol. 29, No. 1, Feb. 2014.
8. M. K. Bucher, C.M. Franck, "Analysis of Transient Fault Currents in Multi-Terminal HVDC Networks during Pole-to-Ground Faults", International Conference on Power System Transients (IPST), Vancouver, July 2013.
9. J. Hu, L. Yu, Z. Zhang, J. Lu, "Research on the DC faults in Multi-Terminal DC Transmission System Based on MMC", International Journal of Advanced Research in Electrical, Electronics and Instrumentation Engineering, Vol. 2, Issue 5, May 2013.
10. D. Paul. "DC traction power system grounding", in Industry Applications Conference, 2001. Thirty-Sixth IAS Annual Meeting. Conference Record of the 2001 IEEE, Vol. 4, pp. 2133-2139, Oct.,2001.
11. .M. Xu, L.Y. Xiao, H.F. Wan, "The state of art for fault location in multi-

- terminal DC system", in Renewable Power Generation Conference (RPG 2013), 2nd IET, Beijing, Sept. 2013.
12. O.M.K.K. Nanayakkara, A. D.Rajapakse, R. Wachal "Traveling-Wave-Based Line Fault Location in Star-connected Multiterminal HVDC systems", IEEE Trans. on Power Delivery, Vol. 27, pp.2286-2294, 2012.
  13. R.T. Pinto, P. Bauer, S.F. Rodrigues, E.J. Wiggelinkhuizen, J. Pierik, B. Ferreira. "A Novel Distributed Direct-Voltage Control Strategy for Grid Integration of Offshore Wind Energy Systems Through MTDC Network", Trans. on Industrial Electronics, Vol. 60, pp. 2429-2441, 2013.
  14. D. Van Hertem, M. Ghandhari, "Multi-terminal VSC HVDC for the European Supergrid: Obstacles", Renewable and Sustainable Energy Reviews, Vol. 14, No. 9, pp. 3156 – 3163, 2010.
  15. C.M. Franck, "HVDC Circuit Breakers: A Review Identifying Future Research Needs," IEEE Trans. Power Delivery, vol. 26, no. 2, pp. 998–1007, 2011.
  16. N.R. Chaudhuri, B. Chaudhuri, R. Majumder, a. Yazdani, Multi-terminal Direct-Current Grids. Wiley, 2014.
  17. C. Meyer, M. Kowal, R.W. De Doncker, "Circuit Breaker Concepts for Future High-Power DC-Applications", in Industry Applications Conference, 2005. Fourtieth IAS Annual Meeting, Vol. 2, 2005.
  18. J. Häfner, B. Jacobson, "Proactive Hybrid HVDC Breakers - A key innovation for reliable HVDC grids", CIGRE paper 264, Bologna Sept. 2011.
  19. D. Jovcic, "Bidirectional, High-Power DC Transformer", Trans. On Power Delivery, Vol. 24, No. 4, Oct 2009, pp. 2276-2283.