



PREOPERATIVE STERILE PYURIA AS A PROGNOSTIC BIOMARKER FOR INTRAVESICAL RECURRENCE IN UPPER URINARY TRACT UROTHELIAL CARCINOMA

Karunamoorthy R

Associate Professor, Institute of urology, Rajiv Gandhi Government General Hospital, Chennai.

Venkata Bhargava Boppana*

Resident, Institute of urology, Rajiv Gandhi Government General Hospital, Chennai.
*Corresponding Author

ABSTRACT

Purpose: To evaluate if preoperative sterile pyuria can be a prognostic factor for intravesical recurrence (IVR) and overall survival (OS) in patients with upper tract urothelial carcinoma (UTUC) undergoing surgery.

Materials and Methods: We retrospectively reviewed the medical records of patients who were diagnosed with UTUC from October 2003 to December 2016 at Rajiv Gandhi Government General Hospital, Chennai. Sterile pyuria was defined as urine containing five or more white blood cells per high-power field in the absence of bacteria in urine culture. We used a stepwise multivariable Cox proportional hazards model to assess the independent effects of the prognostic factors for IVR and OS.

Results: We investigated a total of 176 patients who were diagnosed with UTUC. Among them, 91 (51.7%) patients had preoperative sterile pyuria. There were no significant differences in the baseline characteristics between the pyuria and non-pyuria groups concerning tumor grade, T stage, tumor multiplicity, and recurrence history. However, there was a significant difference in the IVR between the two groups. In the multivariable analysis, preoperative sterile pyuria, diabetes mellitus, high-grade tumor, and lymphovascular invasion were revealed as independent risk factors for IVR, and only lymphovascular invasion was identified as an independent risk factor for OS.

Conclusions: Preoperative sterile pyuria is significantly associated with IVR in patients with UTUC undergoing surgery, but it is not associated with OS. Furthermore, diabetes mellitus, high-grade tumor, and lymphovascular invasion are also independent prognostic factors for these patients.

KEYWORDS : Prognosis; Pyuria; Recurrence; Urinary bladder; Urologic neoplasms

INTRODUCTION

Urothelial carcinoma, also known as transitional cell carcinoma, originates in the urothelium that lines the urethra, bladder, ureters, and renal pelvis. Although upper tract urothelial carcinoma (UTUC) accounts for approximately 5% to 10% of urothelial tumors, it is becoming increasingly prevalent [1,2]. Radical nephroureterectomy (RNU) with bladder cuff removal represents the standard surgical treatment for UTUC, while segmental ureterectomy has been recently considered in imperative (e.g., renal insufficiency and solitary functional kidney) or elective cases [3].

Due to the aggressive nature of this cancer, the prognosis of UTUC is generally poor, and its oncologic outcomes are unsatisfactory. Therefore, many researchers have attempted to identify its prognostic factors [4]. Postoperatively pathologic T stage, lymph node involvement (LNI), and lymphovascular invasion (LVI) are known as the prognostic factors for UTUC. Similarly, preoperative factors, including increased age, presence of hydronephrosis, tumor location and neutrophil-to-lymphocyte ratio have reportedly been associated with poor prognosis [2,4-6].

Intravesical recurrence (IVR) is known to occur in 30%– 50% of patients within the first year after RNU for UTUC [7]. Recently, a series of studies including meta-analyses have reported that prophylactic intravesical chemotherapy decreased bladder tumor recurrence after surgical treatment [2,7,8]. Therefore, in order to predict IVR after RNU, many studies have been conducted to identify factors such as positive urine cytology, multifocality and the use of diagnostic ureteroscopy [8-10].

Pyuria, easily identified using low-cost non-invasive urine tests, reflects the inflammatory state of the urinary tract. Numerous studies have reported that pyuria is a significant prognostic factor in urothelial carcinomas [11-15]. However, to date, only a few studies have evaluated whether sterile pyuria can be a predictive factor for IVR [12,13]. Thus, the purpose of this study was to evaluate if preoperative sterile pyuria can be a prognostic factor for IVR and overall survival (OS) in patients with UTUC undergoing surgery.

MATERIALS AND METHODS

After institutional review board approval, we retrospectively reviewed the medical records of patients who were diagnosed with UTUC and treated at Rajiv Gandhi Government General Hospital, Chennai. from October 2003 to December 2016. The study protocol conforms to the ethical guidelines of the 1975 Declaration of Helsinki, as reflected in a

prior approval by the Institutional Review Board of Rajiv Gandhi Government General Hospital, Chennai.(approval number: 2018AS0011). Due to retrospective enrollment, written informed consent from patients was waived. After excluding patients who had insufficient clinical data, metastatic disease, undergone previous or concomitant radical cystectomy, received preoperative antibiotics due to urinary tract infections, and positive identification of bacteria in urine culture, a total of 176 patients who underwent laparoscopic/open RNU or open segmental ureterectomy were finally included in this study. Sterile pyuria was defined as urine containing five or more white blood cells (WBCs) per high-power field (HPF) in the absence of bacteria in urine culture. The urine analysis and urine culture were performed on all patients before any manipulation such as cystoscopy, ureteroscopy, or surgery. A standard RNU with bladder cuff removal was performed on most patients, while segmental ureterectomy was conducted on selected patients, considering the following: age, comorbidities such as chronic renal failure, location, number, size, and grade of the tumor, as well as previous or concomitant bladder cancer. Extended lymphadenectomy was not performed routinely if clinically apparent lymphadenopathy was not present on intraoperative or preoperative imaging. In addition, transurethral resection was performed before RNU or segmentectomy if patients were diagnosed with synchronous non-muscle invasive bladder cancer (NMIBC). Among 176 patients with UTUC, a total of 42 patients with non-metastatic, locally advanced upper tract urothelial cell carcinoma (pT3, pT4, or pT1-2N1-3) after undergoing RNU received adjuvant chemotherapy. To meet the criteria for adjuvant chemotherapy, treatment must have started within 3 months of undergoing RNU. Cisplatin-based chemotherapy was the most common regimen; 26 patients received gemcitabine/ cisplatin regimen, and 10 received methotrexate/vinblastine/ doxorubicin/cisplatin regimen. Six patients with impaired renal function received a gemcitabine/carboplatin regimen.

All clinicopathological data including age; sex; body mass index; microscopic WBC count in the urine; preoperative cytology; presence of smoking, hypertension, diabetes mellitus (DM), and preoperative hydronephrosis; tumor side, size, and site (renal pelvis, ureter, or both); surgical method (RNU or segmentectomy); type of surgery (open or laparoscopy); previous or synchronous NMIBC; pathologic T stage; tumor grade (according to the TNM classification and World Health Organization grade); concomitant carcinoma in situ; lymph node status; LVI; positive surgical margin; and IVR were collected from the hospital records. Postoperative follow-up including cystoscopy, blood or urinary cytology, abdominal or chest computed

tomography and bone scans were performed in accordance with the routine surveillance protocol. Patients were subjected to a general follow-up every 3 months for 2 years after surgery and every 6 months from the third year.

Chi-square tests and Student t-tests were used for comparisons of clinicopathological features between the pyuria group and non-pyuria group. After confirming the significant factors in the previous analysis, univariate and multivariable Cox proportional hazard models were used. The intravesical recurrence-free survival (IVRFS) and OS curves were calculated using the Kaplan–Meier method. The IVRFS was defined as the time from the date of the RNU or segmentectomy to the date of the transurethral re- section of bladder tumor (TURBT) for IVR. For all analyses, differences were considered significant at a p-value of <0.05. Statistical analyses were performed using the IBM SPSS Statistics ver. 21.0 software (IBM Corp., Armonk, NY, USA)

Table 1. Characteristics of UTUC patients presenting with pyuria and without pyuria

Characteristic	No pyuria (n=85)	Pyuria (n=91)	p-value
Age	66.59±10.20	65.63±10.51	0.809
Sex (male)	58 (68.2)	65 (71.4)	0.348
Follow-up periods (mo)	31.80±30.26	41.45±31.47	0.428
Body mass index (kg/m ²)	24.17±3.03	24.53±3.53	0.319
Smoking	29 (34.1)	34 (37.4)	0.370
Hypertension	46 (54.1)	56 (61.5)	0.251
Diabetes mellitus	19 (22.4)	23 (25.3)	0.359
Tumor size			0.185
<3 cm	45 (52.9)	41 (45.1)	
≥3 cm	40 (47.1)	50 (54.9)	
Tumor side			0.367
Right	47 (55.3)	46 (50.5)	
Left	38 (44.7)	45 (49.5)	
Operation type			0.584
RNU	74 (87.1)	81 (89.0)	
Segmental ureterectomy	11 (12.9)	10 (11.0)	
Operation method			0.142
Open	51 (60.0)	62 (68.1)	
Laparoscopic	34 (40.0)	29 (31.9)	
Previous or synchronous bladder cancer	17 (20.0)	21 (23.1)	0.446
Preoperative cytology			0.247
No	39 (45.9)	31 (34.1)	
Atypical cell	23 (27.1)	26 (28.6)	
Malignant cell	23 (27.1)	34 (37.4)	
Preoperative URS	11 (12.9)	11 (12.1)	0.584
Present of hydronephrosis	51 (60.0)	54 (59.3)	0.756
Tumor site			0.848
Renal pelvis	30 (35.3)	36 (39.6)	
Ureter	42 (49.4)	40 (44.0)	
Both	13 (15.3)	15 (16.5)	
Multiplicity	10 (11.8)	16 (17.6)	0.208
T category			0.299
Ta/T1	35 (41.2)	41 (45.1)	
T2-T4	50 (58.8)	50 (54.9)	
Concomitant CIS	23 (27.1)	32 (35.2)	0.376
Tumor grade			0.561
Low grade	24 (28.2)	24 (26.4)	
High grade	61 (71.8)	67 (73.6)	
Lymph node			0.188
N0, Nx	70 (82.4)	80 (87.9)	
N1	15 (17.6)	11 (12.1)	
LVI	20 (23.5)	19 (20.9)	0.879
PSM	13 (15.3)	13 (14.3)	0.555
Intravesical recurrence	16 (18.8)	49 (53.8)	<0.05
Adjuvant chemotherapy	20 (23.5)	22 (24.2)	0.563

Values are presented as mean±standard deviation or number (%). UTUC, upper tract urothelial cell carcinoma; RNU, radical nephroureterectomy; URS, ureteroscopy; CIS, carcinoma in situ; LVI, lymphovascular invasion; PSM, positive surgical margin.

The mean age of patients was 66.1 years old and the mean follow-up period was 36.9 months. Patients were divided into two groups according to the presence, or absence of sterile pyuria, with the former condition occurring in 91 of 176 patients. Table 1 details the characteristics of UTUC patients presenting with, and without pyuria. There were no significant differences in the baseline characteristics between the pyuria group and the non-pyuria group regarding age, sex, follow-up period, body mass index, smoking, co-morbidities, tumor grade, T stage, multiplicity, or recurrence history. Bladder cancer recurred in 49 (53.8%) patients with pyuria and in 16 (18.8%) patients without pyuria, showing a significant statistical difference (p<0.05).

Results of the univariate and multivariable Cox proportional hazards analyses that predict IVR and the OS in all patients with UTUC are detailed in Tables 2 and 3, respectively. In the multivariable model, sterile pyuria (hazard ratio [HR], 3.504; p=0.001) was an independent prognostic factor for IVR. Moreover, the other factors significantly associated with IVR were DM (HR, 2.056; p=0.022), high-grade tumor (HR, 1.865; p=0.037), and LVI (HR, 2.620; p=0.019) (Table 2). In the univariate analysis, OS was associated with the tumor stage (p=0.007), tumor grade (p=0.037), LNI (p=0.009), and LVI (p=0.001). However, in the multivariable analysis, OS was not significantly related to other factors, except for LVI (HR, 3.713; p=0.018) (Table 3).

The Kaplan–Meier analysis showed that IVRFS (12 months) was significantly shorter for sterile pyuria (58.8% vs. 30.5%, respectively; p=0.001), LVI (48.6% vs. 28.6% respectively; p=0.032), DM (45.6% vs. 37.5%, respectively; p=0.019), and high-grade tumor (62.2% vs. 27.3%, respectively; p=0.003) (Fig. 1). Additionally, in the 2-year OS, the tumor stage (94.9% vs. 87.5%, respectively; p=0.004), tumor grade

(94.9% vs. 89.0%, respectively; p=0.027), LNI (94.6% vs. 62.2%, respectively; p=0.005), LVI (95.4% vs. 73.6%, respectively; p=0.001), and positive surgical margin (93.9 vs. 67.7%, respectively; p=0.001) showed a significantly worse outcome. Conversely, the py-uria group had a lower OS than the non-pyuria group, with- out a significant difference (92.8% vs. 87.6%, respectively; p=0.650).

Table 2. Univariate and multivariable analysis of intravesical recurrence

Characteristic	Univariate analysis		Multivariable analysis	
	HR (95% CI)	p-value	HR (95% CI)	p-value
Diabetes mellitus	1.942 (1.073–3.515)	0.028	2.056 (1.108–3.815)	0.022
Preoperative URS	0.621 (0.301–1.243)	0.175		
Concomitant CIS	1.609 (0.857–3.022)	0.139		
Tumor grade				
Low grade	Ref.	Ref.	Ref.	Ref.
High grade	2.208 (1.261–3.867)	0.006	1.865 (1.039–3.347)	0.037
LVI	2.540 (1.169–5.521)	0.019	2.620 (1.173–5.853)	0.019
Preoperative pyuria	3.542 (1.740–7.207)	0.001	3.504 (1.704–7.207)	0.001

HR, hazards ratio; CI, confidence interval; URS, ureteroscopy; CIS, carcinoma in situ; Ref., reference; LVI, lymphovascular invasion.

Table 3. Univariate and multivariable analysis of overall survival

Characteristic	Univariate analysis		Multivariable analysis	
	HR (95% CI)	p-value	HR (95% CI)	p-value
Preoperative URS	0.735 (0.172–3.138)	0.677		
T category				
Ta/T1	Ref.	Ref.	Ref.	Ref.
T2-T4	3.912 (1.444–10.599)	0.007	1.887 (0.504–7.604)	0.346
Concomitant CIS	1.536 (0.642–3.673)	0.335		
Tumor grade				
Low grade	Ref.	Ref.	Ref.	Ref.
High grade	3.186 (1.074–9.449)	0.037	1.206 (0.298–4.878)	0.793
Lymph node				
N0, Nx	Ref.	Ref.	Ref.	Ref.
N1-2	3.321 (1.352–8.155)	0.009	0.914 (0.298–2.799)	0.874
LVI	6.026 (2.633–13.793)	0.001	3.713 (1.247–11.052)	0.018
Preoperative pyuria	1.220 (0.516–2.883)	0.651		
PSM	4.354 (1.684–11.255)	0.002	1.823 (0.639–5.204)	0.262

HR, hazards ratio; CI, confidence interval; URS, ureteroscopy; Ref., reference; CIS, carcinoma in situ; LVI, lymphovascular invasion; PSM, positive surgical margin.

DISCUSSION

Many studies on prognostic biomarkers such as tumor stage, tumor grade, positive surgical margin, and LVI that affect the prognosis of UTUC have been conducted [4–6]. The functional relationship between inflammation and cancer is well documented. Many studies have shown that inflammation plays a crucial role in tumor development during various stages, from tumor initiation to promotion, malignant conversion, invasion, and tumor metastasis [16,17]. Recently, a novel inflammatory index such as the neutrophil-to-lymphocyte ratio has been used as a prognostic factor in various malignancies, and several studies have reported that systemic inflammation has a significant association with IVR and poor prognosis of UTUC [10,18,19]. Moreover, Tanaka et al. [20] reported the prognosis of UTUC using C-reactive protein as an inflammatory biomarker.

Previously, pyuria has been used as an indicator to reflect the inflammatory status of the urinary tract, such as urinary tract infection, genitourinary tuberculosis, urinary tract stone, autoimmune disease, interstitial cystitis, or urinary tract neoplasm [21]. Recently, pyuria has been regarded as a valuable prognostic indicator for urothelial carcinoma.

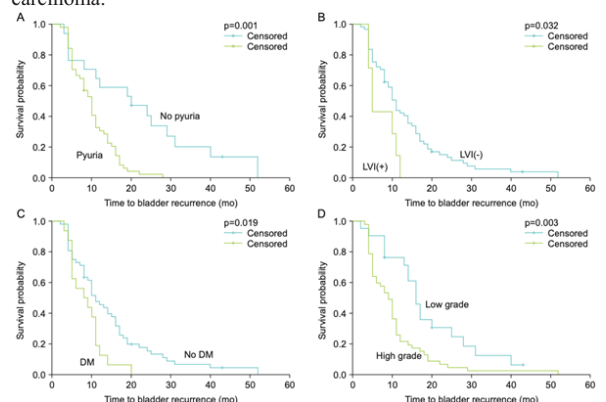


Fig. 1. Kaplan–Meier plots showing the probability of intravesical recurrence-free survival in 176 patients with upper tract urothelial carcinoma, stratified by the following predictors for intravesical recurrence: (A) preoperative pyuria, (B) lymphovascular invasion (LVI), (C) diabetes mellitus (DM), and (D) tumor grade.

Azuma et al. [11] first reported that the presence of pyuria could be used as an indicator of recurrence and progression of NMIBC. Other researchers have also shown a significant association between preoperative pyuria and IVR in patients with NMIBC treated with TURBT and suggested the use-fulness of pyuria as a prognostic factor in patients undergoing bacillus Calmette–Guerin therapy [12,22].

In UTUC, preoperative pyuria has also been reported as a prognostic biomarker. Liang et al. [13] first reported the association between preoperative pyuria and UTUC prognosis. Their retrospective analysis

indicated that preoperative pyuria was significantly associated with advanced pathologic T stage. In addition, pyuria has been described as an independent prognostic factor for postoperative survival. Yoshida et al. [14] also revealed that preoperative pyuria has a significant association with poor recurrence-free survival, cancer-specific survival (CSS), and OS in their multivariable analyses. Fukushima et al. [23] first reported that there was a significant relationship between preoperative pyuria and IVR in UTUC. However, they demonstrated that preoperative pyuria and bacteriuria (≥ 5 bacteria/HPF) were associated with a longer IVRFS, which was inconsistent with our findings. They suggested that bacteriuria and pyuria may have a protective effect against IVR after RNU. The reason for this result is assumed to be the inclusion of preoperative bacteriuria in their analysis. Also, they used a retrospective analysis of a relatively small study sample (97 patients). Milojevic et al. [24] recently published a study indicating that preoperative pyuria is not associated with bladder cancer recurrence and survival. In that study, multivariable analysis showed that preoperative pyuria was not significantly associated with IVR and CSS ($p=0.56$ and 0.79). However, in the univariate analysis, preoperative pyuria showed a tendency to be associated with IVR and CSS ($p=0.01$ and 0.02). Thus, a large-scale study may be required. To the best of our knowledge, the present study is the first to evaluate the prognostic value of preoperative sterile pyuria as an early sign of IVR in patients with UTUC, which may help clinicians in planning subsequent treatment after radical surgery.

The mechanism of preoperative pyuria as an indicator of the inflammatory status of the urinary tract affecting IVR has not yet been elucidated. Pyuria is a condition wherein the urine contains WBCs. Thus, neutrophils have a dominant role in IVR based on these findings. A high neutrophil count seems to be correlated with a pro-tumor inflammatory state reflecting an impaired tumor immunity and enhanced tumor promotion, which may be associated with an advanced tumor stage or grade. In addition, malignant transformation can be promoted through cytokines such as interleukin 6, tumor necrosis factor-alpha, and plasminogen activator inhibitor-1, in an inflammatory microenvironment [17,19].

The preoperative finding that predicts IVR is useful in many ways. Ito et al. [25] indicated that early intravesical instillation of pirarubicin seemingly reduced IVR after surgery in UTUC in their prospective randomized phase II trial. Wu et al. [7] also reported in their meta-analysis that prophylactic intravesical instillation of chemotherapy can prevent IVR in patients with primary UTUC after surgery. Therefore, if IVR can be predicted post-surgery, patients who can be actively considered for early intravesical treatment after surgery may be selected. However, most of the prognostic factors that have suggested IVR in UTUC are related to pathologic findings. There are limitations to pathologic findings when selecting patients who need immediate treatment because of the time required for pathologic confirmation. Therefore, the fact that preoperative factors such as sterile pyuria are related with postoperative IVR can assist clinicians to decide on a suitable patient treatment strategy.

Although sterile pyuria was considered as a predictor of IVR in the current study, the concept of recurrence was limited only to the bladder. Basically, recurrence is defined as a tumor relapse in the surgical field or regional lymph node and/or distant metastasis, including urothelial carcinoma in the bladder or contralateral upper tract. In the present study, the T stage, tumor grade, LNI, LVI, and positive surgical margins had significant correlations (p -value of <0.05) in the univariate analysis, as in the study of Yoshida et al. [14]. Conversely, only LVI had a significant correlation in the multivariable analysis of OS. Furthermore, sterile pyuria had no significant association with OS in the Cox proportional hazards analysis in this study because the number of patients who died during the study was insufficient for statistical significance, due to censored survival data and a relatively short-term follow-up period. DM, high-grade tumor, and LVI, were also analyzed as independent factors for IVR in our study. Hu et al. [26] demonstrated that DM was a significant factor in the IVR of patients who underwent RNU. They revealed that there was an association with reduced antioxidative capacity and DM, and that oxidative stress could cause malignant transformations, such as genomic instability and DNA mutation. Although it was not analyzed as a significant factor in meta-analysis, high-grade tumors were analyzed as a predictive factor, as noted in the study published by Narukawa et al. [27] which reported that UTUC cells from multifocal and high-grade tumors might have intravesical implantation potential.

There are some limitations to this study. Firstly, the study has a retrospective design and is composed of data from two hospitals. Thus, a larger, prospective multicenter study is needed to validate our findings. Second, the surgeries were performed by multiple surgeons, and a selection bias such as each surgeon's surgical method and presence or absence of lymph node dissection may affect the oncological outcomes. Third, we defined the cut-off value of pyuria as ≥ 5 WBCs per HPF according to the study conducted by Hooker et al. [28] However, the cut-off value needs to be validated. Despite these limitations, preoperative pyuria is expected to be useful as a predictor of IVR because it can be easily identified using low-cost non-invasive tests.

CONCLUSIONS

This study demonstrated that preoperative sterile pyuria is significantly associated with IVR in patients with UTUC undergoing surgery, but not associated with OS. Furthermore, DM, high-grade tumor, and LVI are also independent prognostic factors for these patients. Preoperative sterile pyuria in this cohort can be a useful prognostic factor for predicting IVR, and it will be helpful in determining the treatment or monitoring strategy of UTUC after surgery. A larger study cohort is required to determine the correlation between sterile pyuria and IVRFS in UTUC.

CONFLICTS OF INTEREST

The authors have nothing to disclose.

REFERENCES

- Munoz JJ, Ellison LM. Upper tract urothelial neoplasms: incidence and survival during the last 2 decades. *J Urol* 2000;164:1523-5.
- Rouprêt M, Babjuk M, Compérat E, Zigeuner R, Sylvester RJ, Burger M, et al. European Association of Urology Guidelines on Upper Urinary Tract Urothelial Carcinoma: 2017 update. *Eur Urol* 2018;73:111-22.
- Dalpiatz O, Ehrlich G, Quehenberger F, Pummer K, Zigeuner R. Distal ureterectomy is a safe surgical option in patients with urothelial carcinoma of the distal ureter. *Urol Oncol* 2014;32:34.e1-8.
- Cha EK, Shariat SF, Kormaksson M, Novara G, Chromecki TF, Scherr DS, et al. Predicting clinical outcomes after radical nephroureterectomy for upper tract urothelial carcinoma. *Eur Urol* 2012;61:818-25.
- Messer JC, Terrell JD, Herman MP, Ng CK, Scherr DS, Scoll B, et al. Multi-institutional validation of the ability of preoperative hydronephrosis to predict advanced pathologic tumor stage in upper-tract urothelial carcinoma. *Urol Oncol* 2013;31:904-8.
- Marchioni M, Cindolo L, Autorino R, Primiceri G, Arcaniolo D, De Sio M, et al. High neutrophil-to-lymphocyte ratio as prognostic factor in patients affected by upper tract urothelial cancer: a systematic review and meta-analysis. *Clin Genitourin Cancer* 2017;15:343-9.e1.
- Wu P, Zhu G, Wei D, Liu S, Walsh K, Li D, et al. Prophylactic intravesical chemotherapy decreases bladder tumor recurrence after nephroureterectomy for primary upper tract urothelial carcinoma: a systematic review and meta-analysis. *J BUON* 2015;20:1229-38.
- Xylinas E, Kluth L, Passoni N, Trinh QD, Rieken M, Lee RK, et al. Prediction of intravesical recurrence after radical nephro-ureterectomy: development of a clinical decision-making tool. *Eur Urol* 2014;65:650-8.
- Marchioni M, Primiceri G, Cindolo L, Hampton LJ, Grob MB, Guruli G, et al. Impact of diagnostic ureteroscopy on intravesical recurrence in patients undergoing radical nephroureterectomy for upper tract urothelial cancer: a systematic review and meta-analysis. *BJU Int* 2017;120:313-9.
- Seisen T, Granger B, Colin P, Léon P, Utard G, Renard-Penna R, et al. A systematic review and meta-analysis of clinicopathologic factors linked to intravesical recurrence after radical nephroureterectomy to treat upper tract urothelial carcinoma. *Eur Urol* 2015;67:1122-33.
- Azuma T, Nagase Y, Oshi M. Pyuria predicts poor prognosis in patients with non-muscle-invasive bladder cancer. *Clin Genitourin Cancer* 2013;11:331-6.
- Satake N, Ohno Y, Nakashima J, Ohori M, Tachibana M. *Investig Clin Urol* 2020;61:51-58. www.icurology.org 57 Preoperative pyuria as a biomarker in UTUC Jeon et al Predicting value of preoperative pyuria in patients with non-muscle-invasive bladder cancer. *Int J Urol* 2015;22:645-9.
- Liang C, Wang J, Liu H, Huang L, Xu D, Qian S, et al. Preoperative pyuria predicts advanced pathologic tumor stage and worse survival in patients with urothelial carcinoma of the upper urinary tract treated by radical nephroureterectomy. *Urol Oncol* 2016;34:418.e1-7.
- Yoshida T, Kinoshita H, Shimada S, Sugi M, Matsuda T. Preoperative pyuria is a poor prognostic factor in patients with urothelial carcinoma of the upper urinary tract after surgery. *Clin Genitourin Cancer* 2017;15:e543-50.
- Kim BS, Tae BS, Ku JH, Kwak C, Kim HH, Jeong CW. Rate and association of lower urinary tract infection with recurrence after transurethral resection of bladder tumor. *Investig Clin Urol* 2018;59:10-7.
- Coussens LM, Werb Z. Inflammation and cancer. *Nature* 2002;420:860-7.
- Grivennikov SI, Greten FR, Karin M. Immunity, inflammation, and cancer. *Cell* 2010;140:883-99.
- Zhong JH, Huang DH, Chen ZY. Prognostic role of systemic immune-inflammation index in solid tumors: a systematic review and meta-analysis. *Oncotarget* 2017;8:75381-8.
- Kishimoto N, Takao T, Kuribayashi S, Yamamichi G, Nakano K, Kawamura M, et al. The neutrophil-to-lymphocyte ratio as a predictor of intravesical recurrence in patients with upper urinary tract urothelial carcinoma treated with radical nephro-ureterectomy. *Int J Clin Oncol* 2017;22:153-8.
- Tanaka N, Kikuchi E, Shirotake S, Kanao K, Matsumoto K, Kobayashi H, et al. The predictive value of C-reactive protein for prognosis in patients with upper tract urothelial carcinoma treated with radical nephroureterectomy: a multi-institutional study. *Eur Urol* 2014;65:227-34.
- Wiese GJ, Schlegel PN. Sterile pyuria. *N Engl J Med* 2015;372:1048-54.
- Azuma T, Nagase Y, Oshi M. Pyuria predicts poor prognosis in patients with non-muscle-invasive bladder cancer treated with bacillus Calmette-Guérin. *Mol Clin Oncol* 2015;3:1113-6.
- Fukushima H, Kobayashi M, Kawano K, Morimoto S. Effect of preoperative bacteriuria

- and pyuria on intravesical recurrence in patients with upper tract urothelial carcinoma undergoing radical nephroureterectomy. *In Vivo* 2017;31:1215-20.
24. Milojevic B, Dzamic Z, Bojanic N, Durutovic O, Janicic A, Kajmakovic B, et al. Urothelial carcinoma of the upper urinary tract: preoperative pyuria is not correlated with bladder cancer recurrence and survival. *Int Urol Nephrol* 2019;51:831-8.
 25. Ito A, Shintaku I, Satoh M, Ioritani N, Aizawa M, Tochigi T, et al. Prospective randomized phase II trial of a single early intravesical instillation of pirarubicin (THP) in the prevention of bladder recurrence after nephroureterectomy for upper urinary tract urothelial carcinoma: the THP Monotherapy Study Group Trial. *J Clin Oncol* 2013;31:1422-7.
 26. Hu CY, Tsai YC, Wang SM, Huang CY, Tai HC, Chen CH, et al. Ureteral involvement and diabetes increase the risk of subsequent bladder recurrence after nephroureterectomy for upper urinary tract urothelial carcinoma. *Biomed Res Int* 2015;2015:527976.
 27. Narukawa T, Hara T, Arai E, Komiyama M, Kawahara T, Kanai Y, et al. Tumour multifocality and grade predict intravesical recurrence after nephroureterectomy in patients with upper urinary tract urothelial carcinoma without a history of bladder cancer. *Jpn J Clin Oncol* 2015;45:488-93.
 28. Hooker JB, Mold JW, Kumar S. Sterile pyuria in patients admitted to the hospital with infections outside of the urinary tract. *J Am Board Fam Med* 2014;27:97-103.