

## APPLICATION OF BIDENTINE AND PRF FOR PERIAPICAL HEALING- A REPORT OF 2 CASES

### Dental Science

**Dr Shalini Tomar** Seema Dental College Veerbhadra road PO Box- Pashulok

**Dr Preeti Dhawan\*** Seema Dental College Veerbhadra road PO Box- Pashulok \*Corresponding Author

**Dr Shivangi Chandra** Seema Dental College Veerbhadra road PO Box- Pashulok

**Dr Amrinder Singh** Seema Dental College Veerbhadra road PO Box- Pashulok

**Dr Avantika Tuli** Seema Dental College Veerbhadra road PO Box- Pashulok

### ABSTRACT

Periapical lesion is a local response of bone around the apex of tooth that develops after the necrosis of the pulp tissue or extensive periodontal disease. The successful treatment of periapical inflammatory lesion depends on the reduction and elimination of the offending organism. Root canal therapy, periapical surgery, or extraction of the tooth might be the treatment alternatives. Periapical surgery or root end resection involves the surgical management of a tooth with a periapical lesion which cannot be resolved by conventional endodontic treatment. The present case reports discuss the resolution of periapical pathology by root end resection followed by placement of biodentine and platelet rich fibrin for the successful healing of the pathology.

### KEYWORDS

Platelet rich fibrin, biodentine, root end resection, periapical pathology.

### Introduction

Anterior teeth are the most aesthetic demanding teeth and for good aesthetics they need to be healthy in all aspects. Esthetic dentistry involves a harmonious integration of material selection and smile rehabilitation. In relation to treatment of anterior teeth, the maxillary central incisors are the visual focal point for the smile, thus they should be symmetrical and dominant. Periapical lesion is a local response of bone around the apex of tooth that develops after the necrosis of the pulp tissue or extensive periodontal disease. The successful treatment of periapical inflammatory lesion depends on the reduction and elimination of the offending organism. Root canal therapy, periapical surgery, or extractions of the teeth are the treatment alternatives available.<sup>1</sup>

Periapical surgery and root end resection involves the surgical management of an infected tooth with a periapical lesion which cannot be resolved by conventional endodontic treatment (root canal therapy or endodontic retreatment). It includes the curettage of all periapical soft tissues and sometimes application of different biomaterials to enhance the new bone formation in the defect site.

Application of regenerative therapies using materials such as PRP, PRF and bone grafts have been used for optimal healing of the periapical defect area after degranulation of the lesion. Platelet-rich plasma (PRP), introduced by Whitmen et al. in 1997, is a natural source of growth factors (GF) used to enhance bone regeneration. It is an autologous concentrate of platelets suspended in plasma. It is well known that platelets have many functions beyond that of simple hemostasis. Platelets contain important GF that, when secreted, are responsible for increasing collagen production, recruiting other cells to the site of injury, initiating vascular ingrowth, and inducing cell differentiation. These are all crucial steps in early wound healing.

On the other hand, platelet-rich fibrin (PRF), a second-generation platelet concentrate, has shown to be superior to PRP. It was first developed in France by Choukroun et al. in 2001. PRF allows one to obtain fibrin membranes enriched with platelets and GF after starting from an anticoagulant-free blood harvest. Recently, studies have demonstrated that the PRF membrane has a significant slow sustained release of many key growth factors for at least 1 week and up to 28 days, which means that PRF could release GF with its own biological scaffold for wound healing process.

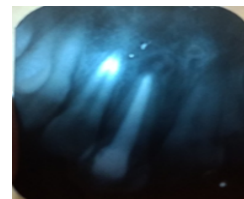
The present case reports describe the management of the periapical inflammatory lesion by root end resection using PRF and biodentine which acted as a source of GF at the healing site, thereby accelerating soft and hard tissue healing.<sup>2</sup>

### CASE REPORT 1

A 15-year-old male patient presented to the Department of Pedodontics and Preventive Dentistry, Seema Dental College and Hospital with the chief complaint of pain in relation to the maxillary right anterior region. On clinical examination patient gave the history of root crown preparation i.r.t 11 6 months back which didn't retain and want replacement for the same along with pain relief. On clinical examination, there was grade I mobility in maxillary right central and lateral incisor. On radiographic examination revealed a well-defined periapical radiolucency of about  $1.2 \times 1.0$  cm around the apices of maxillary right central and lateral incisors. Both the teeth tested responsive to thermal and electric pulp testing. There was only mild tenderness to percussion and palpation. The diagnosis was irreversible pulpitis with chronic apical abscess with respect to maxillary right central and lateral incisors.



**Figure 1- Preoperative clinical image**



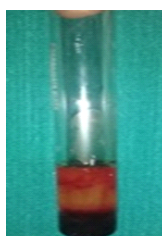
**Figure 1- Preoperative radiograph**



**Figure 3- Intraoperative procedure (flap raise for access of pathological cavity)**



**Figure 4- Intraoperative procedure showing curettage of the pathological cavity) & root end resection done**



**Figure 5-PRF freshly prepared****Figure 7-sutures placed****Figure 6 -PRF placed in the pathological defect.****Figure 8-coe pack placed****Figure 15-Post operative image ,healing completed and PFM crown placed irt 11.12****Figure 16-Post operative radiograph,healing completed and PFM crown placed irt 11.12**

### Management

The treatment plan was decided as root canal therapy in the maxillary left central and lateral incisors followed by root end resection.

The canals were obturated with lateral condensation using gutta-percha points of 20 0.6% taper (Dentsply Maillefer, Ballaigues, Switzerland) and Apexit plus (Ivoclar Vivadent) under rubber dam isolation, 1 day prior to the surgery. Gutta percha was extended to locate the extent of lesion. After effective local anesthesia with 2% lignocaine, a full-thickness Luebke Ochsenbein flap was reflected. A small defect was visible in the cortical plate with the lateral incisor, which was enlarged to aid in complete curettage of the granulation tissue (which was sent for biopsy). This was followed by irrigation with betadine and sterile saline solution. Then the extended gutta percha was cut after this root end resection was done biointentive was placed at root end. PRF was processed from 20 ml of the patient's blood and packed into the defect to completely fill the bony defect. The flap was repositioned and closed with 4-0 silk suture followed by COE-PAK (Gc America)<sup>3</sup>. After this patient was recalled for follow up in which continuous radiographic examination was done and mobility was checked clinically after 3 months complete healing occurred and then in both the cases tooth was rehabilitated by PFM crown in the affected tooth.

### DISCUSSION

Root end resection involves the surgical management of a tooth with a periapical lesion which cannot be resolved by conventional endodontic treatment (root canal therapy or endodontic retreatment). Because the term "Root end resection" consists of only one aspect (removal of root apex) of a complex series of surgical procedures, the terms "periapical surgery" or "periradicular surgery" are more appropriate. The expressions "periapical endodontic surgery" and "apical microsurgery" are also found in the literature. The objective of periapical surgery is to obtain tissue regeneration.<sup>4</sup> This is usually achieved by the removal of periapical pathologic tissue and by exclusion of any irritants within the physical confines of the affected root. An root end resection is done only after a tooth has had at least one root canal procedure and retreatment has not been successful or is not possible. For example, retreatment is often not a good option when a tooth has a crown or is part of a bridge. Retreatment of the root canal would require cutting through the crown or bridge. That might destroy or weaken the crown or bridge. An root end resection is often considered in a situation like this. An root resection is not the same as a root resection. In a root resection, an entire root is removed, rather than just the tip.

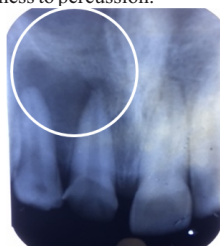
The majority of periapical lesions are associated with endodontic pathology, except in cases of rare developmental cysts or tumors, the primary goal of treatment is orthograde occlusal approach for root canal instrumentation and obturation.

"The richest of resources in nature lie in the nature itself." The world seems to be going back to natural substitutes for all its queries and dilemmas. Modern day medicine and surgery are certainly no exception to this rule. PRP is a natural source of GF that is used to enhance bone regeneration. But PRF, a second-generation platelet concentrate, has shown to be superior to PRP. The major role of fibrin in wound repair is haemostasis, but fibrin also provides a matrix for the migration of fibroblasts and endothelial cells that are involved in angiogenesis and are responsible for remodelling of new tissue. Platelet activation in response to tissue damage and vascular exposure results in the formation of a platelet plug and blood clot, as well as the secretion of biologically active proteins. Platelet alpha ( $\alpha$ ) granules

**Figure 8-Post operative image ,healing completed and PFM crown placed irt 11**

### CASE REPORT 2

A 14 year old male patient presented to the Department of pedodontics and Preventive Dentistry, Seema dental college and hospital with the complaint of pain in relation to maxillary right anterior region. On diagnosis patient gave the history of Root canal treatment irt 11 14 months back. Few days back pain started again in that region. On clinical examination, there was grade I mobility in maxillary right central incisor. On radiographic examination a well-defined cystic like structure was seen irt 11. The affected tooth was tested to thermal and electric pulp testing. There was mild tenderness to percussion.

**Figure 9- Preoperative clinical image****Figure 10- Preoperative radiograph****Figure 11- Intraoperative procedure showing curettage of the pathological cavity) & root end resection done****Figure 12 -PRF placed in the pathological defect****Figure 13- Bone graft also placed in the pathological for rapid healing****Figure 14-sutures placed**

form an intracellular storage pool of GF including platelet-derived growth factor (PDGF), transforming growth factor  $\beta$  (TGF- $\beta$ , including  $\beta$ -1 and  $\beta$ -2-isomers), vascular endothelial growth factor (VEGF), and epidermal growth factor (EGF). Insulin-like growth factor-1 (IGF-1), which is present in plasma, can exert chemotactic effects toward human osteoblasts. After platelet activation, the  $\alpha$  granules fuse with the platelet cell membrane, transforming some of the secretory proteins to a bioactive state. Active proteins are secreted and bind to transmembrane receptors of the target cells to activate intracellular signaling proteins. This results in the expression of a gene sequence that directs cellular proliferation, collagen synthesis, and osteoid production.

The clinical experience confirms that PRF can be considered as a healing biomaterial and it features all the necessary parameters permitting optimal healing, but numerous perspectives of PRF have still to be clinically tested.<sup>5</sup>

## REFERENCES

1. Anantula K, Annareddy A. Platelet-rich fibrin (PRF) as an autologous biomaterial after an endodontic surgery: Case reports. JNTR Univ Health Sci 2016; 5:49-54.
2. Von Arx T, Penarrocha M, Jensen S. Prognostic factors in apical surgery with root-end filling: a meta-analysis. J Endod 2010;36: 957—73.
3. Naik B, Karunakar P, Jayadev M, Marshal V. Role of Platelet rich fibrin in wound healing: A critical review. J Conserv Dent. 2013 Jul-Aug; 16(4): 284–293
4. Angerame D, Biasi M, Kastrioti I, Franco V, Castaldo A, Maglione M. Application of platelet-rich fibrin in endodontic surgery: a pilot study. Giornale Italiano di Endodonzia 2015;29, 51—57
5. Arx Tv. Apical surgery: A review of current techniques and outcome. Saudi Dent J. 2011 Jan; 23(1): 9–15