

Certificate of Publication



ISSN No: 2250-1991

Impact Factor: 6.761

Index Copernicus (IC) Value : 86.18

This is to certify that

*Mr./Mrs./Ms./Prof./Dr. **Sneha Madhavrao Kahalekar***.....

has contributed a paper as author/ Co-author to

PARIPEX- INDIAN JOURNAL OF RESEARCH

A Peer Reviewed, Referred, Refereed & Indexed International Journal

Title "ASSOCIATION OF FEBRILE SEIZURES WITH IRON DEFICIENCY ANEMIA IN CHILDREN.....

and has got published in volume07....., Issue12.....,DECEMBER-2018.....

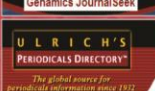
*The Editor in Chief & The Editorial Board appreciate the
Intellectual Contribution of the author/co-author*

1

Executive Editor

Editor in Chief

Member, Editorial Board



Certificate of Publication



ISSN No: 2250-1991

Impact Factor: 6.761

Index Copernicus (IC) Value : 86.18

This is to certify that

Mr./Mrs./Ms./Prof./Dr. S Y Ingale

has contributed a paper as author/ Co-author to

PARIPEX- INDIAN JOURNAL OF RESEARCH

A Peer Reviewed, Referred, Refereed & Indexed International Journal

Title "ASSOCIATION OF FEBRILE SEIZURES WITH IRON DEFICIENCY ANEMIA IN CHILDREN

and has got published in volume07....., Issue12.....,DECEMBER-2018

*The Editor in Chief & The Editorial Board appreciate the
Intellectual Contribution of the author/co-author*

Executive Editor

Editor in Chief

Member, Editorial Board



Certificate of Publication



ISSN No: 2250-1991

Impact Factor: 6.761

Index Copernicus (IC) Value : 86.18

This is to certify that

*Mr./Mrs./Ms./Prof./Dr. **Supriya S. Patil***

has contributed a paper as author/ Co-author to

PARIPEX- INDIAN JOURNAL OF RESEARCH

A Peer Reviewed, Referred, Refereed & Indexed International Journal

Title "ASSOCIATION OF FEBRILE SEIZURES WITH IRON DEFICIENCY ANEMIA IN CHILDREN"

and has got published in volume07....., Issue12....., DECEMBER-2018

*The Editor in Chief & The Editorial Board appreciate the
Intellectual Contribution of the author/co-author*

3
Executive Editor

Editor in Chief

Member, Editorial Board

