

# Certificate of Publication



ISSN No: 2250-1991

Impact Factor: 6.761

Index Copernicus (IC) Value : 86.18

*This is to certify that*

*Mr./Mrs./Ms./Prof./Dr. Shanmuga Priya SV*

*has contributed a paper as author/ Co-author to*

**PARIPEX- INDIAN JOURNAL OF RESEARCH**

*A Peer Reviewed, Referred, Refereed & Indexed International Journal*

*Title "SIMPLE WAY TO FABRICATE A FIXED PROSTHESIS WITH A NON - RIGID CONNECTOR: A CASE REPORT*

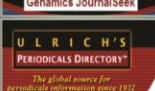
*and has got published in volume .....08....., Issue .....02....., FEBRUARY-2019*

*The Editor in Chief & The Editorial Board appreciate the  
Intellectual Contribution of the author/co-author*

1 *Executive Editor*

*Editor in Chief*

*Member, Editorial Board*



# Certificate of Publication



ISSN No: 2250-1991

Impact Factor: 6.761

Index Copernicus (IC) Value : 86.18

*This is to certify that*

*Mr./Mrs./Ms./Prof./Dr. **Vidya Sankari** .....*

*has contributed a paper as author/ Co-author to*

**PARIPEX- INDIAN JOURNAL OF RESEARCH**

*A Peer Reviewed, Referred, Refereed & Indexed International Journal*

*Title "SIMPLE WAY TO FABRICATE A FIXED PROSTHESIS WITH A NON - RIGID CONNECTOR: A CASE REPORT .....*

*and has got published in volume .....08....., Issue .....02....., FEBRUARY-2019 .....*

*The Editor in Chief & The Editorial Board appreciate the  
Intellectual Contribution of the author/co-author*

2

*Executive Editor*

*Editor in Chief*

*Member, Editorial Board*





# Certificate of Publication



ISSN No: 2250-1991

Impact Factor: 6.761

Index Copernicus (IC) Value : 86.18

*This is to certify that*

*Mr./Mrs./Ms./Prof./Dr. Ashna* .....

*has contributed a paper as author/ Co-author to*

**PARIPEX- INDIAN JOURNAL OF RESEARCH**

*A Peer Reviewed, Referred, Refereed & Indexed International Journal*

*Title "SIMPLE WAY TO FABRICATE A FIXED PROSTHESIS WITH A NON - RIGID CONNECTOR: A CASE REPORT* .....

*and has got published in volume .....08....., Issue .....02....., FEBRUARY-2019* .....

*The Editor in Chief & The Editorial Board appreciate the  
Intellectual Contribution of the author/co-author*

3

*Executive Editor*

*Editor in Chief*

*Member, Editorial Board*



# Certificate of Publication



ISSN No: 2250-1991

Impact Factor: 6.761

Index Copernicus (IC) Value : 86.18

*This is to certify that*

*Mr./Mrs./Ms./Prof./Dr. **Sonali*** .....

*has contributed a paper as author/ Co-author to*

**PARIPEX- INDIAN JOURNAL OF RESEARCH**

*A Peer Reviewed, Referred, Refereed & Indexed International Journal*

*Title "SIMPLE WAY TO FABRICATE A FIXED PROSTHESIS WITH A NON - RIGID CONNECTOR: A CASE REPORT* .....

*and has got published in volume .....08....., Issue .....02....., FEBRUARY-2019* .....

*The Editor in Chief & The Editorial Board appreciate the  
Intellectual Contribution of the author/co-author*

4 *Executive Editor*

*Editor in Chief*

*Member, Editorial Board*

